

# Welcome To

**ROVNER™**  
**P•R•O•D•U•C•T•S**  
◆ MADE IN THE USA ◆

A Comprehensive Guide to Rovner™ Ligatures & Accessories!



[www.rovnerproducts.com](http://www.rovnerproducts.com)

For Product Support:

410-252-7750 x301

[info@rovnerproducts.com](mailto:info@rovnerproducts.com)

© 2017 Rovner™ Products, Inc. All Rights Reserved.

REV 061417

# Table of Contents

3. Why Rovner? Everything You Need to Know
4. The Dark  
The Light  
The MK III
5. The Versa  
The Star Series  
The Legacy
6. The Platinum  
The Versa-X  
The Van Gogh
7. How To Clean and Maintain Your Ligature  
Other Product Tips
8. Educator's Ligature Selection Guide
9. All Models/Sizes/Finishes/Cap Sizes Chart
10. Most Common Fit Chart
11. Mouthpiece Brand Names / Known Ligature Sizes  
*Generic to Bari*
12. Mouthpiece Brand Names / Known Ligature Sizes  
*Barone to Drake*
13. Mouthpiece Brand Names / Known Ligature Sizes  
*Dukoff to Meyer*
14. Mouthpiece Brand Names / Known Ligature Sizes  
*Morgan to Precision Crafted*
15. Mouthpiece Brand Names / Known Ligature Sizes  
RIA to Runyon
16. Mouthpiece Brand Names / Known Ligature Sizes  
Runyon to Tibbs
17. Mouthpiece Brand Names / Known Ligature Sizes  
*Vandoren to Zagar*
18. The PROTEUS Rectangular Bore Clarinet Barrel
19. The Mouthpiece Manager by Rovner

# Why Rovner?

## ● Continuous Improvement!

We've been obsessed with it for over 40 years, and our products continue to evolve, break new ground, and offer an expanding accessory wardrobe that provides performance-enhancing solutions to players at every level of achievement! Our goal is to produce powerful, elegant, technically superior ligatures that will deliver accurate intonation and increased ease of play for woodwind players in every musical genre and in any setting. Although there have been many imitators over the years, there's only ONE Rovner™! We're the ligature of choice for discerning musicians and educators, providing consistently superior performance now and for generations of players to come!

## ● Our Products Are Innovative!

Starting with the original DARK, every Rovner™ ligature has been designed using a combination of science, engineering, sound technology, and music theory...a powerful mix resulting in a synergistic relationship between the reed, ligature, mouthpiece...and the player!

## ● Our Materials!

Rovner™ ligatures are made in the USA of USA-made components. The ligature material and hardware are created to our specifications and go through a series of treatments and proprietary processes to ensure their durability and imbue them with energetic response! The textile used in Rovner ligatures is *not* leather and is, therefore, not prone to stretching over time the way leather might. They feature our standard Dual Tone Finish hardware (most saxes, all Versas), or standard Polished Alloy hardware (all clarinets, some saxes).

## ● More Models...More Sizes!

With NINE different ligature models, each available in anywhere from nine to twenty-three sizes, we have a ligature that can fit most any mouthpiece! All are hand-assembled and inspected, and all include a genuine Rovner cap.

## ● There's Something For Everyone!

We don't make ligatures "just for students" or "just for professionals." Although the Dark is often recommended for students, it is also enjoyed by some pro or celebrity artists who simply won't play anything else. And although our *Next Generation* models bring extra performance features most easily appreciated by experienced players, advancing student players can also reap their benefits.

## ● They're Patented!

That means nobody else makes a ligature with the same unique features resulting in the same exceptional performance capabilities! Our *Next Generation* models feature **Mass-Loaded Technology®** and/or our unique **Resonating Ribs®**. Our *Classic* models have been updated, too, both aesthetically and to take full advantage of the performance boost of our patented elements!

***Want to have some fun? Check out three informative Rovner videos!***  
<https://youtu.be/t4EasXx-n1k?list=PLHYk4kcmfXvSF7q6X3xbftjdyTP539AY>

Rovner Products are covered by one or more U.S. Patents, including:

7,863,509 / 7,626,105 / 7,939,738 / 7,982,112, / 8,410,344 / 8,283,541 / 8,586,845 / 5,998,715 / 8,841,529

## DARK

CLASSIC  
MODEL!



*The ORIGINAL! An all-purpose, multi-genre ligature offering reliable performance for all types of players! Despite many imitators, still our best seller!*

- **Dark, warm and resonant**
- **Assists in producing a full, centered tone**
- **A solid and remarkable performer since 1974!**
- **Although technologically superior, its sound is similar to the sound produced by the age-old string ligature**
- **Especially enjoyed by classical players, it has also been the “go-to” ligature for music educators for decades!**

*Often Selected By:*

Players seeking a general-purpose, multi-genre ligature  
Concert band players  
Jazz band players

## LIGHT

CLASSIC  
MODEL!



*A variation on the Dark, for those who are looking for a brighter sound.*

- **Responsive and free-playing**
- **Affords a full range of musical expression for jazz improvisation**
- **The lively Light is ideal for those seeking a more contemporary sound!**

*Often Selected By:*

Jazz band players  
Some marching band players, although other Rovner ligatures can provide better projection for competing with the brass!  
Some rock/blues band players

## MK III

CLASSIC  
MODEL!



*A variation on the Dark, the MK III delivers both a dark sound and enhanced facility!*

- **A premium ligature that gives greater weight and tonal substance than either the Dark or the Light.**
- **Similar to the Dark, but responds with a heftier tone.**
- **Historically, the MK III has held great appeal to band directors looking for a bit of a boost for their woodwinds.**

*Often Selected By:*

Concert band players  
Jazz band players  
Some marching band players, although other Rovner ligatures can provide better projection for competing with the brass!  
Some rock/blues band players



CLASSIC MODEL!

## VERSA

The Versa is the "Eddie Daniels" model successor, & the high-performance predecessor to the Next Generation Versa-X! A favorite among pro players!

- Repositionable flaps and cradle with inserts that can be configured to produce six different tones
- Rewards the player with a big, rich sound
- Offers complete tonal control
- Accurate intonation through all registers
- Flaps may be arranged assymmetrically to accommodate irregular reeds
- Ideal for the player seeking to fine-tune the ligature's responsiveness and tonal qualities!

Often Selected By:

Concert band/orchestra players (*extremely popular clarinet ligature!*)  
 Jazz band players  
 Some marching band and rock/blues band players



NEXT GENERATION!

## STAR SERIES

A value-priced ligature offering extreme resonance without "coloring" the tone. Ideal for the developing player with an immature embouchure!

- Exceptionally resonant and free-blowing
- Improves intonation for the beginning student...  
**Makes playing fun!**
- Durable...almost indestructible
- Easy to install, even for inexperienced players
- Flexible, yielding more playable reeds
- Delivers warmth & resonance in acoustic jazz & blues settings

Often Selected By:

Budget-conscious players still seeking performance  
 Concert band players, especially beginners  
 Acoustic jazz players  
 Great for some woodshedding...bathes the player in sound!



NEXT GENERATION!

## LEGACY

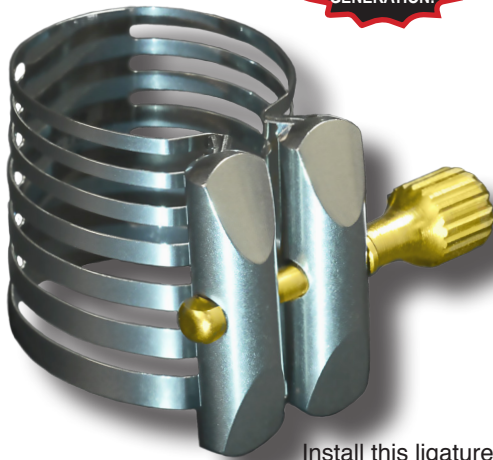
A powerhouse ligature offering the ultimate in "presence" and projection!

- Incredible cut and projection
- Superior articulation & increased facility
- Competes with amplified instruments, even when played acoustically
- Holds tone & intonation even when played triple fortissimo
- Enjoyed by the jazz/rock/blues player delivering a high-energy performance, by clarinetists whose playing style pushes the envelope of dynamics and expression, and can give a boost to marching band players!

Often Selected By:

Players seeking to boost/brighten a muddy set-up  
 Jazz players  
 Marching band players  
 Rock/blues band players

NEXT  
GENERATION!



Install this ligature  
with the pins against  
the reed!

## PLATINUM

*A "jewel" of a ligature offering the ultimate in tonal purity, blending peerless performance and visual beauty!*

- **Pure, medium-dark tone...ringing & bell-like**
- **Effortlessly played, with incredible evenness of scale, smoothing out the difficult transitions between registers**
- **Superior control for a centered tone and flawless intonation**
- **Bolsters the lower registers for both saxes and clarinets**
- **Enhanced facility and response**
- **Durably constructed of highly-tempered, impeccably polished, space-age metal alloy**

*Often Selected By:*

Players seeking to smooth out a "harsh" set-up  
Concert band/orchestra players  
Jazz players  
Rock/blues band players

NEXT  
GENERATION!



*A BIG ligature with a BIG sound! The Van Gogh is 30-50% taller than any other standard ligature! Break the paradigm of "dark" or "bright" and enjoy full freedom of expression!*

- **Offers greater presence and access to a fuller tonal spectrum**
- **Eliminates pinch points that restrict vibration**
- **Offers excellent intonation, response, projection & articulation**
- **Supports and stabilizes without mashing the reed, yet grips firmly, reducing reed shift...*great for synthetic reeds!***
- **Its neutral tone responds readily to subtle adjustments, giving the player the ultimate control. Lively & strong, passionate & dark, smooth & sweet, the Van Gogh does it all!**

*Often Selected By:*

Soloists & recording artists who want a clean, "uncolored" tone  
Concert band/orchestra players  
Jazz players  
Rock/blues band players...Marching band players

## VERSA-X

NEXT  
GENERATION!



*A groundbreaking "pro" ligature with universal appeal. Repositionable flaps offer tonal versatility. Shines in any setting! Most popular Next Generation model for pros and advancing students!*

- **Rich, focused and versatile...locks in intonation while accessing a full range of expression**
- **Concert band? It's our darkest ligature when the inner flaps are positioned over the cradle. Jazz or marching band? Exposing the cradle to the reed adds brilliance while maintaining a rich, centered core**
- **Incredible evenness of scale**
- **Projection and control through all registers**
- **Takes student players from the football field to the concert hall!**

*Often Selected By:*

Band directors, to meet the many demands on the high schooler!  
Concert band/orchestra players  
Jazz players  
Rock/blues band players...Marching band players

# How To Clean & Maintain Your Rovner Ligature

A Rovner ligature is an investment that will last for many years. Some of the earliest Rovner Darks (our original model) are still in circulation and have been in constant use for decades! These simple tips will help keep Rovner ligatures in topnotch condition for optimum performance.

## Cleaning:

Our **textile ligatures** can be cleaned with just mild soap and water. Allow to dry.

The Platinum, our only **all-metal ligature** can be cleaned with mild soap and water...NEVER clean with an abrasive! Dry it with a soft cloth and buff it to a lovely shine.

Our caps can be hand-washed with mild soap and water.

## Lubrication:

The hardware on each Rovner ligature is lubricated before it leaves the factory. To keep the screw and thumbnut in good working order, occasional re-lubrication of the threads on the metal parts is necessary. Use a bit of household oil or cork grease.

## The Natural Aging Process:

After *many* years of use, your textile ligature may become dull in appearance. This is normal. If there is any fraying, it can be carefully trimmed away with sharp scissors. Replacement hardware is available if parts are ever lost or damaged.

## More Product Tips

1. **Properly fitting ligatures** have *approximately* a 1/4" gap between the two pins. If the pins meet when you tighten the ligature, it may be too big. If the gap between the pins greatly exceeds 1/4" the ligature may be too small. Remember that metal and hard rubber-type mouthpieces have different geometries. See the chart below for help in choosing the correct ligature. After several uses, a Rovner ligature will break in and take a "set" to the mouthpiece.

2. **Caps** can be re-formed slightly to adjust the fit. Warm the cap in a cup of hot (not boiling!) water. To expand it, slip the warmed cap onto mouthpiece with ligature in place. Allow to cool overnight. To tighten the fit, heat the cap in hot water, then wind a rubber band around it, pulling the edges tighter, and allow it to cool and dry overnight. It will take a new, tighter set on the mouthpiece.

| LIGATURE SIZE RELATIONSHIP CHART |           |         |  |         |  |         |  |         |  |         |  |                   |         |         |  |                   |  |         |  |                              |  |                   |  |            |  |       |         |
|----------------------------------|-----------|---------|--|---------|--|---------|--|---------|--|---------|--|-------------------|---------|---------|--|-------------------|--|---------|--|------------------------------|--|-------------------|--|------------|--|-------|---------|
| SMALLEST                         | H. RUBBER | 1 R X S |  |         |  | 1 R V S |  |         |  | 1 E     |  | H. RUBBER         | LARGEST |         |  |                   |  |         |  |                              |  |                   |  |            |  |       |         |
|                                  |           | ①       |  |         |  | ②       |  |         |  | ③       |  |                   |         |         |  |                   |  |         |  |                              |  |                   |  |            |  |       |         |
| SMALLEST                         | METAL     | 1 M V S |  | 2 R S M |  | 3 I M S |  | 4 I M B |  | 5 I M D |  | 6 I M (A) I M (T) |         | 7 R A M |  | 8 2 M (A) 2 M (T) |  | 9 R T M |  | 10 3 M L 3 M L (A) 3 M L (T) |  | 11 3 M L 3 M L NY |  | 12 3 M V L |  | METAL | LARGEST |
|                                  |           | ①       |  | ②       |  | ③       |  | ④       |  | ⑤       |  | ⑥                 |         | ⑦       |  | ⑧                 |  | ⑨       |  | ⑩                            |  | ⑪                 |  | ⑫          |  |       |         |

**Hard Rubber Style Ligatures Are Slightly More Conical In Shape.**

**Metal Style Ligatures Are More Cylindrical, With Straighter Sides.**

# Educator's Ligature Selection Guide

|                | Next Generation Models        |        |         |          |          | Classic Models   |       |
|----------------|-------------------------------|--------|---------|----------|----------|------------------|-------|
|                | Star Series                   | Legacy | Versa-X | Platinum | Van Gogh | Dark Light MKIII | Versa |
| University     |                               | 😊😊     | 😊😊      | 😊😊       | 😊😊       | 😊                | 😊😊    |
|                |                               | 🎺🎷     | 🎺🎷🎷     | 🎺🎷       | 🎺🎷       | 🎺                | 🎷🎷    |
| High School    |                               | 😊😊     | 😊😊      | 😊        | 😊😊       | 😊                | 😊     |
|                |                               | 🎺🎷     | 🎺🎷🎷     | 🎺🎷       | 🎺🎷       | 🎺                | 🎷🎷    |
| Middle School  | 😊😊                            |        |         |          |          | 😊                |       |
|                | Students in early development |        |         |          |          | 🎺                |       |
| Primary School | 😊😊                            |        |         |          |          | 😊                |       |
|                | Beginning students            |        |         |          |          | 🎺                |       |

**LEGEND:**

- 😊 A very good choice
- 😊😊 An excellent choice
- 🎺🎷 Marching Band (or Military Band)
- 🎷 Jazz or Stage Band
- 🎺 Concert Band/Orchestra

*This visual guide is meant as a quick and easy reference when searching for the best ligature for your students. Click the "Ligatures" tab on our website for complete information.*

[www.rovnerproducts.com](http://www.rovnerproducts.com)



# ALL MODELS/SIZES/FINISHES CAP SIZES CHART

## Updated 12/5/16

**Note:** If you do not know your Rovner Ligature size, it is stamped on the inside of your ligature

- = Indicates Dual Tone Finish, All Others Polished Alloy Finish
- = Indicates Most Common Fit For Hard Rubber-Style Mouthpieces
- = Cap Sizes Updated 11/2016. Where Changes Have Been Made, Old Cap Size Is In Brackets

| Mouthpiece Type                           | Classic Models |        |                |       |        |       |          |        | Next Generation Models |        |        |        |         |       |          |         |           |     |
|---|----------------|--------|----------------|-------|--------|-------|----------|--------|------------------------|--------|--------|--------|---------|-------|----------|---------|-----------|-----|
|   | Dark           | Cap    | Light          | Cap   | MKIII  | Cap   | Versa    | Cap    | Star Series            | Cap    | Legacy | Cap    | Versa-X | Cap   | Platinum | Cap     | Van Gogh  | Cap |
| Bb German String & Eb Clarinet (HR)       | 1E             | 1      | L-1E (L-4)     | 1     | C-1E   | 7     | V-1E     | 2 [7]  | SS-1E                  | 1A [8] | LG-1E  | 1A [1] | X-1E    | 7     | P-1E     | 6       | VG-1E     | 1   |
| Alto Std. / Tenor & Bari X. Slim (Metal)  | 1M             | 6 [5]  | L-1M (L-11)    | 6 [5] | C-1M   | 6 [5] |          |        | SS-1M                  | 6A     | LG-1M  | 6      | X-1M    | 5     | P-1M     | 6A      |           |     |
| Alto Sax (Metal)                          |                |        |                |       |        |       | V-1M(A)  | 2A [5] |                        |        |        |        |         |       |          |         |           |     |
| Tenor & Bari X. Slim (Metal)              |                |        |                |       |        |       | V-1M(T)  | 2A [5] |                        |        |        |        |         |       |          |         |           |     |
| Soprano Slim / Alto X. Slim (Metal)       | 1MB            | 6      |                |       |        |       |          |        |                        |        |        |        |         |       |          |         |           |     |
| Soprano Sax (Metal)                       | 1MD            | 8      |                |       |        |       |          |        |                        |        |        |        |         |       |          |         |           |     |
| Soprano Slim (Metal)                      | 1MS            | 8      | L-1MS (L-2)    | 8     |        |       |          |        |                        |        |        |        |         |       |          |         |           |     |
| Soprano X. Slim (Metal)                   | 1MVS           | 8A [8] |                |       |        |       |          |        |                        |        |        |        |         |       |          |         |           |     |
| Bb Clarinet (HR)                          | 1R             | 7      | L-1R (L-5)     | 7     | C-1R   | 7     | V-1R     | 7      | SS-1R                  | 1      | LG-1R  | 1      | X-1R    | 7     | P-1R     | 6 [1A]  | VG-1R     | 7   |
| Alto Std. / Tenor Slim (HR)               | 1RL            | 7      | L-1RL (L-6)    | 7     | C-1RL  | 7     | V-1RL(A) | 7      | SS-1RL                 | 1      | LG-1RL | 7      | X-1RL   | 3 [7] | P-1RL    | 1A [2A] | VG-1RL(A) | 7   |
| Tenor Slim (HR)                           |                |        |                |       |        |       | V-1RL(T) | 3      |                        |        |        |        |         |       |          |         |           |     |
| Alto Slim (HR)                            | 1RR            | 7      |                |       |        |       |          |        |                        |        |        |        |         |       |          |         |           |     |
| Soprano Sax (HR)                          | 1RVS           | 1      | L-1RVS (L-3)   | 1     | C-1RVS | 1     | V-1RVS   | 1 [7]  | SS-1RVS                | 8      |        |        | X-1RVS  | 1 [7] | P-1RVS   | 8A      | VG-1RVS   | 1   |
| Soprano Std. / Soprano Slim (HR)          | 1RXS           | 8      |                |       | C-1RXS | 8     | V-1RXS   | 8      |                        |        |        |        |         |       |          |         |           |     |
| Tenor Slim / Alto LG. (Metal)             | 2M             | 5      | L-2M (L-12)    | 5     | C-2M   | 5     |          |        | SS-2M                  | 6      | LG-2M  | 6 [5A] | X-2M    | 5     | P-2M     | 6A      |           |     |
| Alto Slim (Metal)                         |                |        |                |       |        |       | V-2M(A)  | 2A [2] |                        |        |        |        |         |       |          |         |           |     |
| Tenor Slim (Metal)                        |                |        |                |       |        |       | V-2M(T)  | 5      |                        |        |        |        |         |       |          |         | VG-2M(T)  | 5   |
| Tenor Std. / Bari Slim (HR)               | 2R             | 3      | L-2R (L-8)     | 3     | C-2R   | 3     | V-2R     | 4      | SS-2R                  | 3A     | LG-2R  | 3      | X-2R    | 4     | P-2R     | 5 [2]   | VG-2R     | 3   |
| Bari Slim / Alto LG. (HR)                 | 2RBL           | 3      | L-2RBL (L-7.5) | 3     |        |       |          |        |                        |        |        |        |         |       |          |         |           |     |
| Alto Clarinet (HR)                        | 2RS            | 3      | L-2RS (L-7)    | 3     |        |       |          |        |                        |        |        |        |         |       |          |         |           |     |
| Tenor Std. / Bari Slim / Alto LG. (Metal) | 3ML            | 5      | L-3ML (L-13)   | 5     | C-3ML  | 5     |          |        | SS-3ML                 | 5A     | LG-3ML | 5A     | X-3ML   | 3A    | P-3ML    | 5A [2A] |           |     |
| Alto LG. (Metal)                          |                |        |                |       |        |       | V-3ML(A) | 5 [3A] |                        |        |        |        |         |       |          |         |           |     |
| Tenor Std. / Bari Slim (Metal)            |                |        |                |       |        |       | V-3ML(T) | 5 [3A] |                        |        |        |        |         |       |          |         | VG-3ML(T) | 5   |
| Tenor Large (Metal)                       | 3ML-NY         | 5      |                |       |        |       |          |        | SS-3ML-NY              | 5A     |        |        |         |       |          |         |           |     |
| Baritone Sax (Metal)                      | 3MVL           | 5 [3]  |                |       |        |       |          |        |                        |        |        |        |         |       |          |         |           |     |
| Baritone Sax (HR)                         | 3R             | 4      | L-3R (L-9)     | 4     | C-3R   | 4     | V-3R     | 4      | SS-3R                  | 4A [4] | LG-3R  | 4      | X-3R    | 4     | P-3R     | 4A      | VG-3R     | 4   |
| Bass Clarinet (HR)                        | 3RL            | 4      | L-3RL (L-10)   | 4     | C-3RL  | 4     | V-3RL    | 4      | SS-3RL                 | 4      | LG-3RL | 4      | X-3RL   | 4     | P-3RL    | 4A      | VG-3RL    | 4   |
| Bass Sax / Large Bari Sax (HR)            | 4R             | 4      |                |       |        |       |          |        |                        |        |        |        |         |       |          |         |           |     |
| Contra Bass Clarinet (HR)                 | 4RL            | 4      |                |       |        |       |          |        |                        |        |        |        |         |       |          |         |           |     |
| Contra Alto Clarinet (HR)                 | 4RS            | 4      |                |       |        |       |          |        |                        |        |        |        |         |       |          |         |           |     |
| Alto Sax (Metal)                          |                |        |                |       |        |       | V-RAM    | 2      | SS-RAM                 | 6A [6] |        |        |         |       | P-RAM    | 6A      |           |     |
| Soprano Sax (Metal)                       |                |        |                |       |        |       | V-RSM    | 8      |                        |        |        |        |         |       |          |         |           |     |
| Tenor Sax (Metal)                         |                |        |                |       |        |       | V-RTM    | 5      | SS-RTM                 | 5A     | LG-RTM | 5A     |         |       | P-RTM    | 6A      |           |     |

## Ligature Most Common Fit

### SAXOPHONE

| Hard Rubber M.P.'s       | Classic Models |             |         |          | Next Generation Models |              |         |          |           |
|--------------------------|----------------|-------------|---------|----------|------------------------|--------------|---------|----------|-----------|
|                          | Dark           | Light       | MarkIII | Versa    | Star Series            | Legacy       | Versa-X | Platinum | Van Gogh  |
| Sopranino                | 1RXS           | ----        | C-1RXS  | V-1RXS   | ----                   | ----         | ----    | ----     | ----      |
| Soprano                  | 1RVS           | L-1RVS (L3) | C-1RVS  | V-1RVS   | SS-1RVS                | discontinued | X-1RVS  | P-1RVS   | VG-1RVS   |
| Alto                     | 1RL            | L-1RL (L6)  | C-1RL   | V-1RL    | SS-1RL                 | LG-1RL       | X-1RL   | P-1RL    | VG-1RL    |
| Tenor                    | 2R             | L-2R (L8)   | C-2R    | V-2R     | SS-2R                  | LG-2R        | X-2R    | P-2R     | VG-2R     |
| Baritone                 | 3R             | L-3R (L9)   | C-3R    | V-3R     | SS-3R                  | LG-3R        | X-3R    | P-3R     | VG-3R     |
| Bass                     | 4R             | ----        | ----    | ----     | ----                   | ----         | ----    | ----     | ----      |
| <b>Metal Mouthpieces</b> |                |             |         |          |                        |              |         |          |           |
|                          | Dark           | Light       | MarkIII | Versa    | Star Series            | Legacy       | Versa-X | Platinum | Van Gogh  |
| Soprano                  | ----           | ----        | ----    | ----     | ----                   | ----         | ----    | ----     | ----      |
| Alto                     | 1M             | L-1M (L11)  | C-1M    | V-1M(A)  | SS-1M                  | LG-1M        | X-1M    | P-1M     |           |
| Tenor                    | 2M             | L-2M (L12)  | C-2M    | V-2M(T)  | SS-2M                  | LG-2M        | X-2M    | P-2M     | VG-2M(T)  |
| Baritone                 | 3ML            | L-3ML (L13) | C-3ML   | V-3ML(T) | SS-3ML                 | LG-3ML       | X-3ML   | P-3ML    | VG-3ML(T) |

### CLARINET

|   | Dark | Light       | MarkIII    | Versa | Star Series                                  | Legacy | Versa-X            | Platinum | Van Gogh |
|---|------|-------------|------------|-------|--|--------|--------------------|----------|----------|
| Bb (soprano)                                      | 1R   | L-1R (L5)   | C-1R       | V-1R  | SS-1R  | LG-1R  | X-1R               | P-1R     | VG-1R    |
| (German String Type) or<br>(Runyon Custom & Jazz) | 1E   | L-1E (L4)   | C-1E       | V-1E  | SS-1E  | LG-1E  | X-1E               | P-1E     | VG-1E    |
| Eb (soprano)                                      | 1E   | L-1E (L4)   | C-1E       | V-1E  | SS-1E  | LG-1E  | X-1E               | P-1E     | VG-1E    |
| Eb (alto)   | 2RS  | L-2RS (L7)  | ----       | ----  | ----   | ----   | ----               | ----     | ----     |
| Bb (bass)   | 3RL  | L-3RL (L10) | C-3RL      | V-3RL | SS-3RL                                       | LG-3RL | X-3RL              | P-3RL    | VG-3RL   |
| EEb (contra alto)                                 | 4RS  | ----        | ----       | ----  | ----   | ----   | ----               | ----     | ----     |
| BBb (contra bass)                                 | 4RL  | ----        | ----       | ----  | ----   | ----   | ----               | ----     | ----     |
| <b>Physical Size - smallest to largest</b>        |      |             |            |       | <b>New product codes for Light ligatures</b> |        |                    |          |          |
|   |      |             |            |       | <b>WAS</b>                                   |        | <b>NOW</b>         |          |          |
| Hard Rubber Type                                  |      |             | Metal Type |       | L1   |        | discontinued       |          |          |
|   |      |             | 1MVS       |       | L2   |        | L-1MS              |          |          |
|   |      |             | RSM        |       | L3   |        | L-1RVS             |          |          |
| 1RXS  |      |             |            |       | L4   |        | L-1E               |          |          |
|   |      |             | 1MS        |       | L5   |        | 1R                 |          |          |
|   |      |             | 1MB        |       | L6   |        | L-1RL              |          |          |
|   |      |             | 1MD        |       | L7   |        | L-2RS              |          |          |
|   |      |             | 1M         |       | L7.5   |        | L-2RBL             |          |          |
| 1RVS  |      |             |            |       | L8   |        | L-2R               |          |          |
|   |      |             | RAM        |       | L9   |        | L-3R               |          |          |
|   |      |             | 2M         |       | L10  |        | L-3RL              |          |          |
|   |      |             | RTM        |       | L11  |        | L-1M               |          |          |
|   |      |             | 3ML        |       | L12  |        | L-2M               |          |          |
|   |      |             | 3ML-NY     |       | L13  |        | L-3ML              |          |          |
| 1E  |      |             |            |       | L14  |        | superseded by L-13 |          |          |
| 1R/1RR  |      |             |            |       | L15  |        | discontinued       |          |          |
| 1RL   |      |             | 3MVL       |       |  |        |                    |          |          |
| 2RBL/2RS  |      |             |            |       |  |        |                    |          |          |
| 2R  |      |             |            |       |  |        |                    |          |          |
| 3R  |      |             |            |       |  |        |                    |          |          |
| 3RL   |      |             |            |       |  |        |                    |          |          |
| 4R/4RL/4RS  |      |             |            |       |  |        |                    |          |          |

## Mouthpiece Brands - Known Ligature Sizes - Generic to Bari

| Manufacturer    | Manufacturer Model  | Instrument                | Composition | Dark | Light       | Mark III | Versa     | Star Series | Legacy | Versa-x | Platinun | Van Gogh   |
|-----------------|---------------------|---------------------------|-------------|------|-------------|----------|-----------|-------------|--------|---------|----------|------------|
| Most Common Fit | GENERIC             | Eb Clarinet (soprano)     | hard rubber | 1E   | L-1E (L4)   | C-1E     | V-1E      | SS-1E       | LG-1E  | X-1E    | P-1E     | VG-1E      |
| Most Common Fit | GENERIC             | Bb Clarinet (soprano)     | hard rubber | 1R   | L-1R (L5)   | C-1R     | V-1R      | SS-1R       | LG-1R  | X-1R    | P-1R     | VG-1R      |
| Most Common Fit | German String Style | Bb Clarinet (soprano)     | hard rubber | 1E   | L-1E (L4)   | C-1E     | V-1E      | SS-1E       | LG-1E  | X-1E    | P-1E     | VG-1E      |
| Most Common Fit | GENERIC             | Eb Clarinet (alto)        | hard rubber | 2RS  | L-2RS (L7)  |          |           |             |        |         |          |            |
| Most Common Fit | GENERIC             | Bb Clarinet (bass)        | hard rubber | 3RL  | L-3RL (L10) | C-3RL    | V-3RL     | SS-3RL      | LG-3RL | X-3RL   | P-3RL    | VG-3RL     |
| Most Common Fit | GENERIC             | Eb Clarinet (contra alto) | hard rubber | 4RS  |             |          |           |             |        |         |          |            |
| Most Common Fit | GENERIC             | Bb Clarinet (contra bass) | hard rubber | 4RL  |             |          |           |             |        |         |          |            |
| Most Common Fit | GENERIC             | Sopranino Sax             | hard rubber | 1RXS |             | C-1RXS   | V-1RXS    |             |        |         |          |            |
| Most Common Fit | GENERIC             | Soprano Sax               | hard rubber | 1RVS | L-1RVS (L3) | C-1RVS   | V-1RVS    | SS-1RVS     |        | X-1RVS  | P-1RVS   | VG-1RVS    |
| Most Common Fit | GENERIC             | Soprano Sax               | metal       | N.A. |             |          |           |             |        |         |          |            |
| Most Common Fit | GENERIC             | Alto Sax                  | hard rubber | 1RL  | L-1RL (L6)  | C-1RL    | V-1RL(A)  | SS-1RL      | LG-1RL | X-1RL   | P-1RL    | VG-1RL(A)  |
| Most Common Fit | GENERIC             | Alto Sax                  | metal       | 1M   | L-1M (L11)  | C-1M     | V-1M(A)   | SS-1M       | LG-1M  | X-1M    | P-1M     |            |
| Most Common Fit | GENERIC             | Tenor Sax                 | hard rubber | 2R   | L-2R (L8)   | C-2R     | V-2R      | SS-2R       | LG-2R  | X-2R    | P-2R     | VG-2R      |
| Most Common Fit | GENERIC             | Tenor Sax                 | metal       | 3ML  | L-3ML (L13) | C-3ML    | V-3ML(T)  | SS-3ML      | LG-3ML | X-3ML   | P-3ML    | VG-3ML(T)  |
| Most Common Fit | GENERIC             | Baritone Sax              | hard rubber | 3R   | L-3R (L9)   | C-3R     | V-3R      | SS-3R       | LG-3R  | X-3R    | P-3R     | VG-3R      |
| Most Common Fit | GENERIC             | Baritone Sax              | metal       | 3ML  | L-3ML (L13) | C-3ML    | V-3ML(T)  | SS-3ML      | LG-3ML | X-3ML   | P-3ML    | VG-3ML(T)  |
| Most Common Fit | GENERIC             | Bass Sax                  | hard rubber | 4R   |             |          |           |             |        |         |          |            |
| ARB             |                     | Soprano Sax               | hard rubber | 1RVS | L-1RVS (L3) | C-1RVS   | V-1RVS    | SS-1RVS     |        | X-1RVS  | P-1RVS   | VG-1RVS    |
| ARB             |                     | Soprano Sax               | metal       | 1MVS |             |          |           |             |        |         |          |            |
| ARB             |                     | Alto Sax                  | hard rubber | 1RL  | L-1RL (L6)  | C-1RL    | V-1RL(A)  | SS-1RL      | LG-1RL | X-1RL   | P-1RL    | VG-1RL(A)  |
| ARB             |                     | Alto Sax                  | metal       | 1MB  |             |          |           |             |        |         |          |            |
| ARB             |                     | Tenor Sax                 | hard rubber | 2R   | L-2R (L8)   | C-2R     | V-2R      | SS-2R       | LG-2R  | X-2R    | P-2R     | VG-2R      |
| ARB             |                     | Tenor Sax                 | metal       | 3ML  | L-3ML (L13) | C-3ML    | V-3ML(T)  | SS-3ML      | LG-3ML | X-3ML   | P-3ML    | VG-3ML(T)  |
| ARB             |                     | Baritone Sax              | metal       | 1M   | L-1M (L11)  | C-1M     | V-1M(T)   | SS-1M       | LG-1M  | X-1M    | P-1M     |            |
| AM MOUTHPIECES  | THE ARAS            | Soprano Sax               | metal       | 1M   | L-1M (L11)  | C-1M     | V-1M (T)  | SS-1M       | LG-1M  | X-1M    | P-1M     |            |
| AM MOUTHPIECES  | THE LUNA            | Soprano Sax               | metal       | 1M   | L-1M (L11)  | C-1M     | V-1M (T)  | SS-1M       | LG-1M  | X-1M    | P-1M     |            |
| AM MOUTHPIECES  | THE KATANA          | Soprano Sax               | metal       | 1M   | L-1M (L11)  | C-1M     | V-1M (T)  | SS-1M       | LG-1M  | X-1M    | P-1M     |            |
| AM MOUTHPIECES  | THE ARAS            | Alto Sax                  | metal       | 1RVS | L-1RVS (L3) | C-1RVS   | V-1RVS    | SS-1RVS     |        | X-1RVS  | P-1RVS   | VG-1RVS    |
| AM MOUTHPIECES  | THE LUNA            | Alto Sax                  | metal       | 1RVS | L-1RVS (L3) | C-1RVS   | V-1RVS    | SS-1RVS     |        | X-1RVS  | P-1RVS   | VG-1RVS    |
| AM MOUTHPIECES  | THE KATANA          | Alto Sax                  | metal       | 1RVS | L-1RVS (L3) | C-1RVS   | V-1RVS    | SS-1RVS     |        | X-1RVS  | P-1RVS   | VG-1RVS    |
| AM MOUTHPIECES  | COCOBOLO WOOD       | Alto Sax                  | hard rubber | 1RL  | L-1RL (L6)  | C-1RL    | V-1RL (A) | SS-1RL      | LG-1RL | X-1RL   | P-1RL    | VG-1RL (A) |
| AM MOUTHPIECES  | THE ARAS            | Tenor Sax                 | metal       | 1RL  | L-1RL (L6)  | C-1RL    | V-1RL (T) | SS-1RL      | LG-1RL | X-1RL   | P-1RL    | VG-1RL (T) |
| AM MOUTHPIECES  | THE LUNA            | Tenor Sax                 | metal       | 1RL  | L-1RL (L6)  | C-1RL    | V-1RL (T) | SS-1RL      | LG-1RL | X-1RL   | P-1RL    | VG-1RL (T) |
| AM MOUTHPIECES  | THE LUNA            | Tenor Sax                 | hard rubber | 2R   | L-2R (L8)   | C-2R     | V-2R      | SS-2R       | LG-2R  | X-2R    | P-2R     | VG-2R      |
| AM MOUTHPIECES  | THE KATANA          | Tenor Sax                 | metal       | 1RL  | L-1RL (L6)  | C-1RL    | V-1RL (T) | SS-1RL      | LG-1RL | X-1RL   | P-1RL    | VG-1RL (T) |
| AM MOUTHPIECES  | THE KATANA          | Tenor Sax                 | hard rubber | 2R   | L-2R (L8)   | C-2R     | V-2R      | SS-2R       | LG-2R  | X-2R    | P-2R     | VG-2R      |
| AM MOUTHPIECES  | COCOBOLO WOOD       | Tenor Sax                 | hard rubber | 2R   | L-2R (L8)   | C-2R     | V-2R      | SS-2R       | LG-2R  | X-2R    | P-2R     | VG-2R      |
| AM MOUTHPIECES  | THE ARAS            | Baritone Sax              | metal       | 1RL  | L-1RL (L6)  | C-1RL    | V-1RL (T) | SS-1RL      | LG-1RL | X-1RL   | P-1RL    | VG-1RL (T) |
| AM MOUTHPIECES  | THE LUNA            | Baritone Sax              | metal       | 1RL  | L-1RL (L6)  | C-1RL    | V-1RL (T) | SS-1RL      | LG-1RL | X-1RL   | P-1RL    | VG-1RL (T) |
| AM MOUTHPIECES  | THE KATANA          | Baritone Sax              | metal       | 1RL  | L-1RL (L6)  | C-1RL    | V-1RL (T) | SS-1RL      | LG-1RL | X-1RL   | P-1RL    | VG-1RL (T) |
| AM MOUTHPIECES  | COCOBOLO WOOD       | Baritone Sax              | hard rubber | 3R   | L-3R (L9)   | C-3R     | V-3R      | SS-3R       | LG-3R  | X-3R    | P-3R     | VG-3R      |
| BABBIT          |                     | Soprano Sax               | hard rubber | 1RVS | L-1RVS (L3) | C-1RVS   | V-1RVS    | SS-1RVS     |        | X-1RVS  | P-1RVS   | VG-1RVS    |
| BABBIT          |                     | Alto Sax                  | hard rubber | 1RL  | L-1RL (L6)  | C-1RL    | V-1RL(A)  | SS-1RL      | LG-1RL | X-1RL   | P-1RL    | VG-1RL(A)  |
| BABBIT          |                     | Tenor Sax                 | hard rubber | 2R   | L-2R (L8)   | C-2R     | V-2R      | SS-2R       | LG-2R  | X-2R    | P-2R     | VG-2R      |
| BABBIT          |                     | Tenor Sax                 | metal       | 2M   | L-2M (L12)  | C-2M     | V-2M(T)   | SS-2M       | LG-2M  | X-2M    | P-2M     | VG-2M(T)   |
| BABBIT          |                     | Baritone Sax              | hard rubber | 4RL  |             |          |           |             |        |         |          |            |
| BABBIT          |                     | Bass Sax                  | hard rubber | 4R   |             |          |           |             |        |         |          |            |
| BARI            |                     | Soprano Sax               | hard rubber | 1RVS | L-1RVS (L3) | C-1RVS   | V-1RVS    | SS-1RVS     |        | X-1RVS  | P-1RVS   | VG-1RVS    |
| BARI            |                     | Alto Sax                  | hard rubber | 1RL  | L-1RL (L6)  | C-1RL    | V-1RL(A)  | SS-1RL      | LG-1RL | X-1RL   | P-1RL    | VG-1RL(A)  |
| BARI            |                     | Alto Sax                  | metal       | 1MB  |             |          |           |             |        |         |          |            |
| BARI            |                     | Tenor Sax                 | hard rubber | 2R   | L-2R (L8)   | C-2R     | V-2R      | SS-2R       | LG-2R  | X-2R    | P-2R     | VG-2R      |
| BARI            |                     | Tenor Sax                 | metal       | 1M   | L-1M (L11)  | C-1M     | V-1M(T)   | SS-1M       | LG-1M  | X-1M    | P-1M     |            |
| BARI            |                     | Baritone Sax              | metal       | 3ML  | L-3ML (L13) | C-3ML    | V-3ML(T)  | SS-3ML      | LG-3ML | X-3ML   | P-3ML    | VG-3ML(T)  |

## Mouthpiece Brands - Known Ligature Sizes - Barone to Drake

| Manufacturer | Manufacturer Model | Instrument   | Composition | Dark | Light         | Mark III | Versa    | Star Series | Legacy | Versa-x | Platinum | Van Gogh  |
|--------------|--------------------|--------------|-------------|------|---------------|----------|----------|-------------|--------|---------|----------|-----------|
| BARONE       |                    | Soprano Sax  | hard rubber | 1RVS | L-1RVS (L3)   | C-1RVS   | V-1RVS   | SS-1RVS     |        | X-1RVS  | P-1RVS   | VG-1RVS   |
| BARONE       |                    | Alto Sax     | hard rubber | 1RL  | L-1RL (L6)    | C-1RL    | V-1RL(A) | SS-1RL      | LG-1RL | X-1RL   | P-1RL    | VG-1RL(A) |
| BARONE       |                    | Alto Sax     | metal       | 1M   | L-1M (L11)    | C-1M     | V-1M(A)  | SS-1M       | LG-1M  | X-1M    | P-1M     |           |
| BARONE       |                    | Tenor Sax    | hard rubber | 2R   | L-2R (L8)     | C-2R     | V-2R     | SS-2R       | LG-2R  | X-2R    | P-2R     | VG-2R     |
| BARONE       |                    | Tenor Sax    | metal       | 2M   | L-2M (L12)    | C-2M     | V-2M(T)  | SS-2M       | LG-2M  | X-2M    | P-2M     | VG-2M(T)  |
| BEECHLER     |                    | Soprano Sax  | hard rubber | 1RVS | L-1RVS (L3)   | C-1RVS   | V-1RVS   | SS-1RVS     |        | X-1RVS  | P-1RVS   | VG-1RVS   |
| BEECHLER     |                    | Soprano Sax  | metal       | 1MVS |               |          |          |             |        |         |          |           |
| BEECHLER     |                    | Alto Sax     | hard rubber | 1RL  | L-1RL (L6)    | C-1RL    | V-1RL(A) | SS-1RL      | LG-1RL | X-1RL   | P-1RL    | VG-1RL(A) |
| BEECHLER     |                    | Alto Sax     | metal       | 1MB  |               |          |          |             |        |         |          |           |
| BEECHLER     |                    | Tenor Sax    | hard rubber | 2R   | L-2R (L8)     | C-2R     | V-2R     | SS-2R       | LG-2R  | X-2R    | P-2R     | VG-2R     |
| BEECHLER     |                    | Tenor Sax    | metal       | 3ML  | L-3ML (L13)   | C-3ML    | V-3ML(T) | SS-3ML      | LG-3ML | X-3ML   | P-3ML    | VG-3ML(T) |
| BEECHLER     |                    | Baritone Sax | metal       | 3ML  | L-3ML (L13)   | C-3ML    | V-3ML(T) | SS-3ML      | LG-3ML | X-3ML   | P-3ML    | VG-3ML(T) |
| BERG LARSEN  |                    | Soprano Sax  | hard rubber | 1RVS | L-1RVS (L3)   | C-1RVS   | V-1RVS   | SS-1RVS     |        | X-1RVS  | P-1RVS   | VG-1RVS   |
| BERG LARSEN  |                    | Alto Sax     | hard rubber | 1RL  | L-1RL (L6)    | C-1RL    | V-1RL(A) | SS-1RL      | LG-1RL | X-1RL   | P-1RL    | VG-1RL(A) |
| BERG LARSEN  |                    | Alto Sax     | metal       | 1M   | L-1M (L11)    | C-1M     | V-1M(A)  | SS-1M       | LG-1M  | X-1M    | P-1M     |           |
| BERG LARSEN  |                    | Tenor Sax    | hard rubber | 1RL  | L-1RL (L6)    | C-1RL    | V-1RL(T) | SS-1RL      | LG-1RL | X-1RL   | P-1RL    |           |
| BERG LARSEN  |                    | Tenor Sax    | metal       | 2M   | L-2M (L12)    | C-2M     | V-2M(T)  | SS-2M       | LG-2M  | X-2M    | P-1M     | VG-2M(T)  |
| BERG LARSEN  |                    | Baritone Sax | hard rubber | 2RBL | L-2RBL (L7.5) |          |          |             |        |         |          |           |
| BERG LARSEN  |                    | Baritone Sax | metal       | 3ML  | L-3ML (L13)   | C-3ML    | V-3ML(T) | SS-3ML      | LG-3ML | X-3ML   | P-3ML    | VG-3ML(T) |
| BILGER       |                    | Soprano Sax  | hard rubber | 1RVS | L-1RVS (L3)   | C-1RVS   | V-1RVS   | SS-1RVS     |        | X-1RVS  | P-1RVS   | VG-1RVS   |
| BILGER       |                    | Alto Sax     | hard rubber | 1RL  | L-1RL (L6)    | C-1RL    | V-1RL(A) | SS-1RL      | LG-1RL | X-1RL   | P-1RL    | VG-1RL(A) |
| BILGER       |                    | Tenor Sax    | hard rubber | 2R   | L-2R (L8)     | C-2R     | V-2R     | SS-2R       | LG-2R  | X-2R    | P-2R     | VG-2R     |
| BRILHART     |                    | Soprano Sax  | hard rubber | 1RVS | L-1RVS (L3)   | C-1RVS   | V-1RVS   | SS-1RVS     |        | X-1RVS  | P-1RVS   | VG-1RVS   |
| BRILHART     |                    | Alto Sax     | hard rubber | 1RL  | L-1RL (L6)    | C-1RL    | V-1RL(A) | SS-1RL      | LG-1RL | X-1RL   | P-1RL    | VG-1RL(A) |
| BRILHART     |                    | Alto Sax     | metal       | 1M   | L-1M (L11)    | C-1M     | V-1M(A)  | SS-1M       | LG-1M  | X-1M    | P-1M     |           |
| BRILHART     | Slim               | Tenor Sax    | hard rubber | 1RL  | L-1RL (L6)    | C-1RL    | V-1RL(T) | SS-1RL      | LG-1RL | X-1RL   | P-1RL    |           |
| BRILHART     |                    | Tenor Sax    | hard rubber | 2R   | L-2R (L8)     | C-2R     | V-2R     | SS-2R       | LG-2R  | X-2R    | P-2R     | VG-2R     |
| BRILHART     |                    | Tenor Sax    | metal       | 2M   | L-2M (L12)    | C-2M     | V-2M(T)  | SS-2M       | LG-2M  | X-2M    | P-2M     | VG-2M(T)  |
| BRILHART     |                    | Baritone Sax | hard rubber | 3R   | L-3R (L9)     | C-3R     | V-3R     | SS-3R       | LG-3R  | X-3R    | P-3R     | VG-3R     |
| BRILHART     |                    | Baritone Sax | metal       | 3ML  | L-3ML (L13)   | C-3ML    | V-3ML(T) | SS-3ML      | LG-3ML | X-3ML   | P-3ML    | VG-3ML(T) |
| CARAVAN      |                    | Soprano Sax  | hard rubber | 1RVS | L-1RVS (L3)   | C-1RVS   | V-1RVS   | SS-1RVS     |        | X-1RVS  | P-1RVS   | VG-1RVS   |
| CARAVAN      |                    | Alto Sax     | hard rubber | 1RL  | L-1RL (L6)    | C-1RL    | V-1RL(A) | SS-1RL      | LG-1RL | X-1RL   | P-1RL    | VG-1RL(A) |
| CARAVAN      |                    | Tenor Sax    | hard rubber | 2R   | L-2R (L8)     | C-2R     | V-2R     | SS-2R       | LG-2R  | X-2R    | P-2R     | VG-2R     |
| CARAVAN      |                    | Baritone Sax | hard rubber | 4R   |               |          |          |             |        |         |          |           |
| CLAUDE LAKEY |                    | Soprano Sax  | metal       | 1RVS | L-1RVS (L3)   | C-1RVS   | V-1RVS   | SS-1RVS     |        | X-1RVS  | P-1RVS   | VG-1RVS   |
| CLAUDE LAKEY |                    | Alto Sax     | hard rubber | 1RL  | L-1RL (L6)    | C-1RL    | V-1RL(A) | SS-1RL      | LG-1RL | X-1RL   | P-1RL    | VG-1RL(A) |
| CLAUDE LAKEY |                    | Alto Sax     | metal       | 1RL  | L-1RL (L6)    | C-1RL    | V-1RL(A) | SS-1RL      | LG-1RL | X-1RL   | P-1RL    | VG-1RL(A) |
| CLAUDE LAKEY |                    | Tenor Sax    | hard rubber | 2R   | L-2R (L8)     | C-2R     | V-2R     | SS-2R       | LG-2R  | X-2R    | P-2R     | VG-2R     |
| CLAUDE LAKEY |                    | Tenor Sax    | metal       | 1RL  | L-1RL (L6)    | C-1RL    | V-1RL(T) | SS-1RL      | LG-1RL | X-1RL   | P-1RL    |           |
| COUF         |                    | Soprano Sax  | hard rubber | 1RXS |               | C-1RXS   | V-1RXS   |             |        |         |          |           |
| COUF         |                    | Alto Sax     | hard rubber | 1RL  | L-1RL (L6)    | C-1RL    | V-1RL(A) | SS-1RL      | LG-1RL | X-1RL   | P-1RL    | VG-1RL(A) |
| COUF         |                    | Tenor Sax    | hard rubber | 1RL  | L-1RL (L6)    | C-1RL    | V-1RL(T) | SS-1RL      | LG-1RL | X-1RL   | P-1RL    |           |
| COUF         |                    | Baritone Sax | hard rubber | 2R   | L-2R (L8)     | C-2R     | V-2R     | SS-2R       | LG-2R  | X-2R    | P-2R     | VG-2R     |
| DRAKE        | SON OF SLANT       | Soprano Sax  | hard rubber | 1RVS | L-1RVS (L3)   | C-1RVS   | V-1RVS   | SS-1RVS     |        | X-1RVS  | P-1RVS   | VG-1RVS   |
| DRAKE        | VR JAZZ            | Soprano Sax  | hard rubber | 1RVS | L-1RVS (L3)   | C-1RVS   | V-1RVS   | SS-1RVS     |        | X-1RVS  | P-1RVS   | VG-1RVS   |
| DRAKE        | NY JAZZ            | Alto Sax     | hard rubber | 1RL  | L-1RL (L6)    | C-1RL    | V-1RL(A) | SS-1RL      | LG-1RL | X-1RL   | P-1RL    | VG-1RL(A) |
| DRAKE        | VR CONTEMPORY      | Alto Sax     | hard rubber | 1R   | L-1R (L5)     | C-1R     | V-1R     | SS-1R       | LG-1R  | X-1R    | P-1R     | VG-1R     |
| DRAKE        | VR JAZZ            | Alto Sax     | hard rubber | 1R   | L-1R (L5)     | C-1R     | V-1R     | SS-1R       | LG-1R  | X-1R    | P-1R     | VG-1R     |
| DRAKE        | VR CONTEMPORY      | Tenor Sax    | hard rubber | 1RL  | L-1RL (L6)    | C-1RL    | V-1RL(T) | SS-1RL      |        |         | P-1RL    |           |
| DRAKE        | EDDIE DANIELS      | Tenor Sax    | hard rubber | 2R   | L-2R (L8)     | C-2R     | V-2R     | SS-2R       | LG-2R  | X-2R    | P-2R     | VG-2R     |
| DRAKE        | J BERGONZI         | Tenor Sax    | hard rubber | 2RBL | L-2RBL(L7.5)  |          |          |             |        |         |          |           |
| DRAKE        | PETE CHRISTLIEB    | Tenor Sax    | hard rubber | 1M   | L-1M(L11)     | C-1M     |          | SS-1M       |        |         | P-1M     |           |
| DRAKE        | VRSST              | Tenor Sax    | hard rubber | 1E   | L-1E(L4)      | C-1E     |          | SS-1E       |        |         | P-1E     |           |
| DRAKE        | CONTEMPORY         | Baritone Sax | hard rubber | 2RBL | L-2RBL(L7.5)  |          |          |             |        |         |          |           |

## Mouthpiece Brands - Known Ligature Sizes - Dukoff to Meyer

| Manufacturer | Manufacturer Model | Instrument   | Composition | Dark   | Light         | Mark III | Versa    | Star Series | Legacy | Versa-x | Platinun | Van Gogh  |
|--------------|--------------------|--------------|-------------|--------|---------------|----------|----------|-------------|--------|---------|----------|-----------|
| DUKOFF       |                    | Soprano Sax  | metal       | 1MD    |               |          |          |             |        |         |          |           |
| DUKOFF       |                    | Alto Sax     | hard rubber | 2M     | L-2M (L12)    | C-2M     | V-2M(A)  | SS-2M       | LG-2M  | X-2M    | P-2M     |           |
| DUKOFF       |                    | Alto Sax     | metal       | 2M     | L-2M (L12)    | C-2M     | V-2M(A)  | SS-2M       | LG-2M  | X-2M    | P-2M     |           |
| DUKOFF       |                    | Tenor Sax    | metal       | 2M     | L-2M (L12)    | C-2M     | V-2M(T)  | SS-2M       | LG-2M  | X-2M    | P-2M     | VG-2M(T)  |
| DUKOFF       |                    | Baritone Sax | metal       | 3ML    | L-3ML (L13)   | C-3ML    | V-3ML(T) | SS-3ML      | LG-3ML | X-3ML   | P-3ML    | VG-3ML(T) |
| GUARDALLA    |                    | Soprano Sax  | metal       | 1MVS   |               |          |          |             |        |         |          |           |
| GUARDALLA    |                    | Alto Sax     | metal       | 1M     | L-1M (L11)    | C-1M     | V-1M(A)  | SS-1M       | LG-1M  | X-1M    | P-1M     |           |
| GUARDALLA    |                    | Tenor Sax    | metal       | 2M     | L-2M (L12)    | C-2M     | V-2M(T)  | SS-2M       | LG-2M  | X-2M    | P-2M     | VG-2M(T)  |
| GUARDALLA    | OLDER VERSION      | Tenor Sax    | metal       | 1RVS   | L-1RVS (L3)   | C-1RVS   | V-1RVS   | SS-1RVS     |        | X-1RVS  | P-1RVS   | VG-1RVS   |
| GUY HAWKINS  |                    | Alto Sax     | metal       | 1M     | L-1M (L11)    | C-1M     | V-1M(A)  | SS-1M       | LG-1M  | X-1M    | P-1M     |           |
| GUY HAWKINS  |                    | Tenor Sax    | metal       | 1M     | L-1M (L11)    | C-1M     | V-1M(T)  | SS-1M       | LG-1M  | X-1M    | P-1M     |           |
| GUY HAWKINS  |                    | Baritone Sax | metal       | 2M     | L-2M (L12)    | C-2M     | V-2M(T)  | SS-2M       | LG-2M  | X-2M    | P-2M     | VG-2M(T)  |
| HITE         |                    | Alto Sax     | hard rubber | 1RL    | L-1RL (L6)    | C-1RL    | V-1RL(A) | SS-1RL      | LG-1RL | X-1RL   | P-1RL    | VG-1RL(A) |
| HITE         |                    | Tenor Sax    | hard rubber | 1RL    | L-1RL (L6)    | C-1RL    | V-1RL(T) | SS-1RL      | LG-1RL | X-1RL   | P-1RL    |           |
| HITE         |                    | Baritone Sax | hard rubber | 2R     | L-2R (L8)     | C-2R     | V-2R     | SS-2R       | LG-2R  | X-2R    | P-2R     | VG-2R     |
| JODY JAZZ    | CLASSIC            | Soprano Sax  | hard rubber | 1MD    |               |          |          |             |        |         |          |           |
| JODY JAZZ    | HR                 | Soprano Sax  | hard rubber | 1RVS   | L-1RVS (L3)   | C-1RVS   | V-1RVS   | SS-1RVS     |        | X-1RVS  | P-1RVS   | VG-1RVS   |
| JODY JAZZ    | DV & DV NY         | Soprano Sax  | metal       | 1RXS   |               | C-1RXS   | V-1RXS   |             |        |         |          |           |
| JODY JAZZ    | ESP (GOLD)         | Soprano Sax  | metal       | 1MD    |               |          |          |             |        |         |          |           |
| JODY JAZZ    | CLASSIC            | Alto Sax     | hard rubber | 1RL    | L-1RL (L6)    | C-1RL    | V-1RL(A) | SS-1RL      | LG-1RL | X-1RL   | P-1RL    | VG-1RL(A) |
| JODY JAZZ    | HR                 | Alto Sax     | hard rubber | 2RBL   | L-2RBL (L7.5) |          |          |             |        |         |          |           |
| JODY JAZZ    | DV & DV NY         | Alto Sax     | metal       | 1RVS   | L-1RVS (L3)   | C-1RVS   | V-1RVS   | SS-1RVS     |        | X-1RVS  | P-1RVS   | VG-1RVS   |
| JODY JAZZ    | ESP (GOLD)         | Alto Sax     | metal       | 1RVS   | L-1RVS (L3)   | C-1RVS   | V-1RVS   | SS-1RVS     |        | X-1RVS  | P-1RVS   | VG-1RVS   |
| JODY JAZZ    | CLASSIC            | Tenor Sax    | hard rubber | 1RL    | L-1RL (L6)    | C-1RL    | V-1RL(T) | SS-1RL      | LG-1RL | X-1RL   | P-1RL    |           |
| JODY JAZZ    | GIANT              | Tenor Sax    | hard rubber | 2R     | L-2R (L8)     | C-2R     | V-2R     | SS-2R       | LG-2R  | X-2R    | P-2R     | VG-2R     |
| JODY JAZZ    | HR                 | Tenor Sax    | hard rubber | 2R     | L-2R (L8)     | C-2R     | V-2R     | SS-2R       | LG-2R  | X-2R    | P-2R     | VG-2R     |
| JODY JAZZ    | ESP (GOLD)         | Tenor Sax    | metal       | 1RVS   | L-1RVS (L3)   | C-1RVS   | V-1RVS   | SS-1RVS     |        | X-1RVS  | P-1RVS   | VG-1RVS   |
| JODY JAZZ    | DV & DV NY         | Tenor Sax    | metal       | 3ML-NY | L-3ML (L13)   | C-3ML    | V-3ML(T) | SS-3ML-NY   | LG-3ML | X-3ML   | P-3ML    | VG-3ML(T) |
| JODY JAZZ    | JODY Q             | Baritone Sax | hard rubber | 1E     | L-1E (L4)     | C-1E     | V-1E     | SS-1E       | LG-1E  | X-1E    | P-1E     | VG-1E     |
| JODY JAZZ    | CLASSIC            | Baritone Sax | hard rubber | 1RL    | L-1RL (L6)    | C-1RL    | V-1RL(T) | SS-1RL      | LG-1RL | X-1RL   | P-1RL    |           |
| JODY JAZZ    | DV & DV NY         | Baritone Sax | metal       | 3ML    | L-3ML (L13)   | C-3ML    | V-3ML(T) | SS-3ML      | LG-3ML | X-3ML   | P-3ML    | VG-3ML(T) |
| JODY JAZZ    | ESP (GOLD)         | Baritone Sax | metal       | 3ML    | L-3ML (L13)   | C-3ML    | V-3ML(T) | SS-3ML      | LG-3ML | X-3ML   | P-3ML    | VG-3ML(T) |
| JODY JAZZ    | JET                | Baritone Sax | hard rubber | 2R     | L-2R (L8)     | C-2R     | V-2R     | SS-2R       | LG-2R  | X-2R    | P-2R     | VG-2R     |
| JODY JAZZ    |                    | Baritone Sax | metal       | 3ML    | L-3ML (L13)   | C-3ML    | V-3ML(T) | SS-3ML      | LG-3ML | X-3ML   | P-3ML    | VG-3ML(T) |
| LAWTON       |                    | Tenor Sax    | metal       | 3ML    | L-3ML (L13)   | C-3ML    | V-3ML(T) | SS-3ML      | LG-3ML | X-3ML   | P-3ML    | VG-3ML(T) |
| LAWTON       |                    | Baritone Sax | metal       | 3ML    | L-3ML (L13)   | C-3ML    | V-3ML(T) | SS-3ML      | LG-3ML | X-3ML   | P-3ML    | VG-3ML(T) |
| LEBAYLE      |                    | Soprano Sax  | metal       | 1M     | L-1M (L11)    | C-1M     | V-1M(A)  | SS-1M       | LG-1M  | X-1M    | P-1M     |           |
| MACSAX       | D-JAZZ             | Soprano Sax  | hard rubber | 1RVS   | L-1RVS (L3)   | C-1RVS   | V-1RVS   | SS-1RVS     |        | X-1RVS  | P-1RVS   | VG-1RVS   |
| MACSAX       | D-JAZZ             | Alto Sax     | hard rubber | 1RL    | L-1RL (L6)    | C-1RL    | V-1RL(A) | SS-1RL      | LG-1RL | X-1RL   | P-1RL    | VG-1RL(A) |
| MACSAX       | FJ-III             | Alto Sax     | hard rubber | 1RL    | L-1RL (L6)    | C-1RL    | V-1RL(A) | SS-1RL      | LG-1RL | X-1RL   | P-1RL    | VG-1RL(A) |
| MACSAX       | D-JAZZ             | Tenor Sax    | hard rubber | 2R     | L-2R (L8)     | C-2R     | V-2R     | SS-2R       | LG-2R  | X-2R    | P-2R     | VG-2R     |
| MACSAX       | FJ-III             | Tenor Sax    | metal       | 3ML    | L-3ML (L13)   | C-3ML    | V-3ML(T) | SS-3ML      | LG-3ML | X-3ML   | P-3ML    | VG-3ML(T) |
| MACSAX       | D-JAZZ             | Baritone Sax | hard rubber | 2R     | L-2R (L8)     | C-2R     | V-2R     | SS-2R       | LG-2R  | X-2R    | P-2R     | VG-2R     |
| MEYER        |                    | Soprano Sax  | hard rubber | 1RVS   | L-1RVS (L3)   | C-1RVS   | V-1RVS   | SS-1RVS     |        | X-1RVS  | P-1RVS   | VG-1RVS   |
| MEYER        |                    | Alto Sax     | hard rubber | 1RL    | L-1RL (L6)    | C-1RL    | V-1RL(A) | SS-1RL      | LG-1RL | X-1RL   | P-1RL    | VG-1RL(A) |
| MEYER        |                    | Alto Sax     | metal       | 1M     | L-1M (L11)    | C-1M     | V-1M(A)  | SS-1M       | LG-1M  | X-1M    | P-1M     |           |
| MEYER        |                    | Tenor Sax    | hard rubber | 2R     | L-2R (L8)     | C-2R     | V-2R     | SS-2R       | LG-2R  | X-2R    | P-2R     | VG-2R     |
| MEYER        |                    | Tenor Sax    | metal       | 2M     | L-2M (L12)    | C-2M     | V-2M(T)  | SS-2M       | LG-2M  | X-2M    | P-2M     | VG-2M(T)  |
| MEYER        |                    | Baritone Sax | hard rubber | 2R     | L-2R (L8)     | C-2R     | V-2R     | SS-2R       | LG-2R  | X-2R    | P-2R     | VG-2R     |
| MEYER        |                    | Baritone Sax | metal       | 2M     | L-2M (L12)    | C-2M     | V-2M(T)  | SS-2M       | LG-2M  | X-2M    | P-2M     | VG-2M(T)  |
| MEYER        |                    | Bass Sax     | hard rubber | 4R     |               |          |          |             |        |         |          |           |

## Mouthpiece Brands - Known Ligature Sizes - Morgan to Precision Crafted

| Manufacturer      | Manufacturer Model | Instrument   | Composition | Dark   | Light         | Mark III | Versa    | Star Series | Legacy | Versa-x | Platinur | Van Gogh  |
|-------------------|--------------------|--------------|-------------|--------|---------------|----------|----------|-------------|--------|---------|----------|-----------|
| MORGAN            | "C"                | Soprano Sax  | hard rubber | 1RVS   | L-1RVS (L3)   | C-1RVS   | V-1RVS   | SS-1RVS     |        | X-1RVS  | P-1RVS   | VG-1RVS   |
| MORGAN            | "J"                | Soprano Sax  | hard rubber | 1RVS   | L-1RVS (L3)   | C-1RVS   | V-1RVS   | SS-1RVS     |        | X-1RVS  | P-1RVS   | VG-1RVS   |
| MORGAN            | "L&M"              | Soprano Sax  | hard rubber | 1RVS   | L-1RVS (L3)   | C-1RVS   | V-1RVS   | SS-1RVS     |        | X-1RVS  | P-1RVS   | VG-1RVS   |
| MORGAN            | "S"                | Soprano Sax  | hard rubber | 1RVS   | L-1RVS (L3)   | C-1RVS   | V-1RVS   | SS-1RVS     |        | X-1RVS  | P-1RVS   | VG-1RVS   |
| MORGAN            | VINTAGE 1C         | Soprano Sax  | hard rubber | 1RVS   | L-1RVS (L3)   | C-1RVS   | V-1RVS   | SS-1RVS     |        | X-1RVS  | P-1RVS   | VG-1RVS   |
| MORGAN            | "E"                | Alto Sax     | hard rubber | 1R     | L-1R (L5)     | C-1R     | V-1R     | SS-1R       | LG-1R  | X-1R    | P-1R     | VG-1R     |
| MORGAN            | "C"                | Alto Sax     | hard rubber | 1RL    | L-1RL (L6)    | C-1RL    | V-1RL(A) | SS-1RL      | LG-1RL | X-1RL   | P-1RL    | VG-1RL(A) |
| MORGAN            | "L&M"              | Alto Sax     | hard rubber | 1RL    | L-1RL (L6)    | C-1RL    | V-1RL(A) | SS-1RL      | LG-1RL | X-1RL   | P-1RL    | VG-1RL(A) |
| MORGAN            | "S"                | Alto Sax     | hard rubber | 1RL    | L-1RL (L6)    | C-1RL    | V-1RL(A) | SS-1RL      | LG-1RL | X-1RL   | P-1RL    | VG-1RL(A) |
| MORGAN            | EXCALIBER          | Alto Sax     | hard rubber | 1R     | L-1R(L5)      | C-1R     | V-1R     | SS-1R       | LG-1R  | X-1R    | P-1R     | VG-1R     |
| MORGAN            | 4M                 | Alto Sax     | hard rubber | 1RL    | L-1RL (L6)    | C-1RL    | V-1RL(A) | SS-1RL      | LG-1RL | X-1RL   | P-1RL    | VG-1RL(A) |
| MORGAN            | "E"                | Tenor Sax    | hard rubber | 1RL    | L-1RL (L6)    | C-1RL    | V-1RL(T) | SS-1RL      | LG-1RL | X-1RL   | P-1RL    |           |
| MORGAN            | "C"                | Tenor Sax    | hard rubber | 2R     | L-2R (L8)     | C-2R     | V-2R     | SS-2R       | LG-2R  | X-2R    | P-2R     | VG-2R     |
| MORGAN            | "L&M"              | Tenor Sax    | hard rubber | 2R     | L-2R (L8)     | C-2R     | V-2R     | SS-2R       | LG-2R  | X-2R    | P-2R     | VG-2R     |
| MORGAN            | "S"                | Tenor Sax    | hard rubber | 2R     | L-2R (L8)     | C-2R     | V-2R     | SS-2R       | LG-2R  | X-2R    | P-2R     | VG-2R     |
| MORGAN            | "C"                | Tenor Sax    | hard rubber | 2RBL   | L-2RBL (L7.5) |          |          |             |        |         |          |           |
| MORGAN            | EXCALIBER          | Tenor Sax    | hard rubber | 1RL    | L-1RL (L6)    | C-1RL    | V-1RL(T) | SS-1RL      | LG-1RL | X-1RL   | P-1RL    |           |
| MORGAN            | "J"                | Baritone Sax | hard rubber | 3R     | L-3R (L9)     | C-3R     | V-3R     | SS-3R       | LG-3R  | X-3R    | P-3R     | VG-3R     |
| MORGAN            | "C"                | Baritone Sax | hard rubber | 4R     |               |          |          |             |        |         |          |           |
| MORGAN            | "S"                | Baritone Sax | hard rubber | 4R     |               |          |          |             |        |         |          |           |
| MORGAN            | VINTAGE 9*         | Baritone Sax | hard rubber | 2R     | L-2R (L8)     | C-2R     | V-2R     | SS-2R       | LG-2R  | X-2R    | P-2R     | VG-2R     |
| MORGAN            | "C"                | Bass Sax     | hard rubber | 4R     |               |          |          |             |        |         |          |           |
| OTTO LINK         |                    | Soprano Sax  | hard rubber | 1RVS   | L-1RVS (L3)   | C-1RVS   | V-1RVS   | SS-1RVS     |        | X-1RVS  | P-1RVS   | VG-1RVS   |
| OTTO LINK         |                    | Soprano Sax  | metal       | 1MVS   |               |          |          |             |        |         |          |           |
| OTTO LINK         |                    | Alto Sax     | hard rubber | 1RL    | L-1RL (L6)    | C-1RL    | V-1RL(A) | SS-1RL      | LG-1RL | X-1RL   | P-1RL    | VG-1RL(A) |
| OTTO LINK         |                    | Alto Sax     | metal       | 3ML    | L-3ML (L13)   | C-3ML    | V-3ML(A) | SS-3ML      | LG-3ML | X-3ML   | P-3ML    |           |
| OTTO LINK         |                    | Tenor Sax    | hard rubber | 2R     | L-2R (L8)     | C-2R     | V-2R     | SS-2R       | LG-2R  | X-2R    | P-2R     | VG-2R     |
| OTTO LINK         |                    | Tenor Sax    | metal       | 3ML    | L-3ML (L13)   | C-3ML    | V-3ML(T) | SS-3ML      | LG-3ML | X-3ML   | P-3ML    | VG-3ML(T) |
| OTTO LINK         | "NY"               | Tenor Sax    | metal       | 3ML-NY |               |          |          | SS-3ML-NY   |        |         |          |           |
| OTTO LINK         |                    | Baritone Sax | hard rubber | 2R     | L-2R (L8)     | C-2R     | V-2R     | SS-2R       | LG-2R  | X-2R    | P-2R     | VG-2R     |
| OTTO LINK         |                    | Baritone Sax | metal       | 3MVL   |               |          |          |             |        |         |          |           |
| PILLINGER         |                    | Tenor Sax    | hard rubber | 1RL    | L-1RL (L6)    | C-1RL    | V-1RL(T) | SS-1RL      | LG-1RL | X-1RL   | P-1RL    |           |
| PONZOL            | VINTAGE            | Soprano Sax  | hard rubber | 1RVS   | L-1RVS (L3)   | C-1RVS   | V-1RVS   | SS-1RVS     |        | X-1RVS  | P-1RVS   | VG-1RVS   |
| PONZOL            | ALUMINUM           | Soprano Sax  | metal       | 1MB    |               |          |          |             |        |         |          |           |
| PONZOL            | CUSTOM             | Soprano Sax  | metal       | 1MB    |               |          |          |             |        |         |          |           |
| PONZOL            | STAINLESS          | Soprano Sax  | metal       | 1MB    |               |          |          |             |        |         |          |           |
| PONZOL            | EBO                | Alto Sax     | hard rubber | 1RL    | L-1RL (L6)    | C-1RL    | V-1RL(A) | SS-1RL      | LG-1RL | X-1RL   | P-1RL    | VG-1RL(A) |
| PONZOL            | SILVER LINE        | Alto Sax     | hard rubber | 1RL    | L-1RL (L6)    | C-1RL    | V-1RL(A) | SS-1RL      | LG-1RL | X-1RL   | P-1RL    | VG-1RL(A) |
| PONZOL            | VINTAGE            | Alto Sax     | hard rubber | 1RL    | L-1RL (L6)    | C-1RL    | V-1RL(A) | SS-1RL      | LG-1RL | X-1RL   | P-1RL    | VG-1RL(A) |
| PONZOL            | GOLD BRASS         | Alto Sax     | metal       | ?      |               |          |          |             |        |         |          |           |
| PONZOL            | ALUMINUM           | Alto Sax     | metal       | 2M     | L-2M (L12)    | C-2M     | V-2M(A)  | SS-2M       | LG-2M  | X-2M    | P-2M     |           |
| PONZOL            | CUSTOM             | Alto Sax     | metal       | 2M     | L-2M (L12)    | C-2M     | V-2M(A)  | SS-2M       | LG-2M  | X-2M    | P-2M     |           |
| PONZOL            | STAINLESS          | Alto Sax     | metal       | 2M     | L-2M (L12)    | C-2M     | V-2M(A)  | SS-2M       | LG-2M  | X-2M    | P-2M     |           |
| PONZOL            | EBO                | Tenor Sax    | hard rubber | 2R     | L-2R (L8)     | C-2R     | V-2R     | SS-2R       | LG-2R  | X-2R    | P-2R     | VG-2R     |
| PONZOL            | SILVER LINE        | Tenor Sax    | hard rubber | 2R     | L-2R (L8)     | C-2R     | V-2R     | SS-2R       | LG-2R  | X-2R    | P-2R     | VG-2R     |
| PONZOL            | VINTAGE            | Tenor Sax    | hard rubber | 2R     | L-2R (L8)     | C-2R     | V-2R     | SS-2R       | LG-2R  | X-2R    | P-2R     | VG-2R     |
| PONZOL            | GOLD BRASS         | Tenor Sax    | metal       | 2M     | L-2M (L12)    | C-2M     | V-2M(A)  | SS-2M       | LG-2M  | X-2M    | P-2M     |           |
| PONZOL            | ALUMINUM           | Tenor Sax    | metal       | 3ML    | L-3ML (L13)   | C-3ML    | V-3ML(T) | SS-3ML      | LG-3ML | X-3ML   | P-3ML    | VG-3ML(T) |
| PONZOL            | CUSTOM             | Tenor Sax    | metal       | 3ML    | L-3ML (L13)   | C-3ML    | V-3ML(T) | SS-3ML      | LG-3ML | X-3ML   | P-3ML    | VG-3ML(T) |
| PONZOL            | STAINLESS          | Tenor Sax    | metal       | 3ML    | L-3ML (L13)   | C-3ML    | V-3ML(T) | SS-3ML      | LG-3ML | X-3ML   | P-3ML    | VG-3ML(T) |
| PONZOL            | ALUMINUM           | Baritone Sax | metal       | 3ML    | L-3ML (L13)   | C-3ML    | V-3ML(T) | SS-3ML      | LG-3ML | X-3ML   | P-3ML    | VG-3ML(T) |
| PONZOL            | CUSTOM             | Baritone Sax | metal       | 3ML    | L-3ML (L13)   | C-3ML    | V-3ML(T) | SS-3ML      | LG-3ML | X-3ML   | P-3ML    | VG-3ML(T) |
| PONZOL            | STAINLESS          | Baritone Sax | metal       | 3ML    | L-3ML (L13)   | C-3ML    | V-3ML(T) | SS-3ML      | LG-3ML | X-3ML   | P-3ML    | VG-3ML(T) |
| PRECISION CRAFTED |                    | Alto Sax     | metal       |        |               |          | V-RTM    | SS-RTM      | LG-RTM |         | P-RTM    |           |
| PRECISION CRAFTED |                    | Tenor Sax    | metal       | 1M     | L-1M (L11)    | C-1M     | V-1M(T)  | SS-1M       | LG-1M  | X-1M    | P-1M     |           |

## Mouthpiece Brands - Known Ligature Sizes - RIA to Runyon

| Manufacturer | Manufacturer Model | Instrument            | Composition | Dark | Light       | Mark III | Versa    | Star Series | Legacy | Versa-x | Platinum | Van Gogh  |
|--------------|--------------------|-----------------------|-------------|------|-------------|----------|----------|-------------|--------|---------|----------|-----------|
| RIA          |                    | Soprano Sax           | metal       | 1MS  | L-1MS (L2)  |          |          |             |        |         |          |           |
| RIA          |                    | Alto Sax              | metal       | 3ML  | L-3ML (L13) | C-3ML    | V-3ML(A) | SS-3ML      | LG-3ML | X-3ML   | P-3ML    |           |
| RIA          |                    | Tenor Sax             | metal       | 3ML  | L-3ML (L13) | C-3ML    | V-3ML(T) | SS-3ML      | LG-3ML | X-3ML   | P-3ML    | VG-3ML(T) |
| RICO ROYAL   |                    | Soprano Sax           | hard rubber | 1RVS | L-1RVS (L3) | C-1RVS   | V-1RVS   | SS-1RVS     |        | X-1RVS  | P-1RVS   | VG-1RVS   |
| RICO ROYAL   |                    | Alto Sax              | hard rubber | 1RL  | L-1RL (L6)  | C-1RL    | V-1RL(A) | SS-1RL      | LG-1RL | X-1RL   | P-1RL    | VG-1RL(A) |
| RICO ROYAL   |                    | Tenor Sax             | hard rubber | 2R   | L-2R (L8)   | C-2R     | V-2R     | SS-2R       | LG-2R  | X-2R    | P-2R     | VG-2R     |
| RICO ROYAL   |                    | Baritone Sax          | hard rubber | 2R   | L-2R (L8)   | C-2R     | V-2R     | SS-2R       | LG-2R  | X-2R    | P-2R     | VG-2R     |
| ROUSSEAU     |                    | Soprano Sax           | hard rubber | 1RVS | L-1RVS (L3) | C-1RVS   | V-1RVS   | SS-1RVS     |        | X-1RVS  | P-1RVS   | VG-1RVS   |
| ROUSSEAU     |                    | Alto Sax              | hard rubber | 1RL  | L-1RL (L6)  | C-1RL    | V-1RL(A) | SS-1RL      | LG-1RL | X-1RL   | P-1RL    | VG-1RL(A) |
| ROUSSEAU     |                    | Alto Sax              | metal       | 1M   | L-1M (L11)  | C-1M     | V-1M(A)  | SS-1M       | LG-1M  | X-1M    | P-1M     |           |
| ROUSSEAU     |                    | Tenor Sax             | hard rubber | 2R   | L-2R (L8)   | C-2R     | V-2R     | SS-2R       | LG-2R  | X-2R    | P-2R     | VG-2R     |
| ROUSSEAU     |                    | Tenor Sax             | metal       | 2M   | L-2M (L12)  | C-2M     | V-2M(T)  | SS-2M       | LG-2M  | X-2M    | P-2M     | VG-2M(T)  |
| ROUSSEAU     |                    | Baritone Sax          | hard rubber | 2R   | L-2R (L8)   | C-2R     | V-2R     | SS-2R       | LG-2R  | X-2R    | P-2R     | VG-2R     |
| ROVNER       | G SERIES           | Soprano Sax           | hard rubber | 1RXS |             | C-1RXS   | V-1RXS   |             |        |         |          |           |
| ROVNER       | WILKERSON          | Soprano Sax           | hard rubber | 1RXS |             | C-1RXS   | V-1RXS   |             |        |         |          |           |
| ROVNER       | ALL                | Soprano Sax           | metal       |      |             |          | V-RSM    |             |        |         |          |           |
| ROVNER       | G SERIES           | Alto Sax              | hard rubber | 1RL  | L-1RL (L6)  | C-1RL    | V-1RL(A) | SS-1RL      | LG-1RL | X-1RL   | P-1RL    | VG-1RL(A) |
| ROVNER       | WILKERSON          | Alto Sax              | hard rubber | 1RL  | L-1RL (L6)  | C-1RL    | V-1RL(A) | SS-1RL      | LG-1RL | X-1RL   | P-1RL    | VG-1RL(A) |
| ROVNER       | ALL                | Alto Sax              | metal       |      |             |          | V-RAM    | SS-RAM      |        |         | P-RAM    |           |
| ROVNER       | G SERIES           | Tenor Sax             | hard rubber | 2R   | L-2R (L8)   | C-2R     | V-2R     | SS-2R       | LG-2R  | X-2R    | P-2R     | VG-2R     |
| ROVNER       | WILKERSON          | Tenor Sax             | hard rubber | 2R   | L-2R (L8)   | C-2R     | V-2R     | SS-2R       | LG-2R  | X-2R    | P-2R     | VG-2R     |
| ROVNER       | ALL                | Tenor Sax             | metal       |      |             |          | V-RTM    | SS-RTM      | LG-RTM |         | P-RTM    |           |
| ROVNER       | WILKERSON          | Baritone Sax          | hard rubber | 1RL  | L-1RL (L6)  | C-1RL    | V-1RL(T) | SS-1RL      | LG-1RL | X-1RL   | P-1RL    |           |
| RPC          |                    | Baritone Sax          | hard rubber | 2R   | L-2R (L8)   | C-2R     | V-2R     | SS-2R       | LG-2R  | X-2R    | P-2R     | VG-2R     |
| RUNYON       | CUSTOM             | Bb Clarinet (soprano) | hard rubber | 1E   | L-1E (L4)   | C-1E     | V-1E     | SS-1E       | LG-1E  | X-1E    | P-1E     | VG-1E     |
| RUNYON       | JAZZ               | Bb Clarinet (soprano) | hard rubber | 1E   | L-1E (L4)   | C-1E     | V-1E     | SS-1E       | LG-1E  | X-1E    | P-1E     | VG-1E     |
| RUNYON       | "XL"               | Soprano Sax           | hard rubber | 1RXS |             | C-1RXS   | V-1RXS   |             |        |         |          |           |
| RUNYON       | CUSTOM             | Soprano Sax           | hard rubber | 1RXS |             | C-1RXS   | V-1RXS   |             |        |         |          |           |
| RUNYON       | QUANTUM            | Soprano Sax           | hard rubber | 1RXS |             | C-1RXS   | V-1RXS   |             |        |         |          |           |
| RUNYON       | "XL"               | Soprano Sax           | metal       | 1MS  | L-1MS (L2)  |          |          |             |        |         |          |           |
| RUNYON       | SMOOTH BORE        | Soprano Sax           | metal       | 1MS  | L-1MS (L2)  |          |          |             |        |         |          |           |
| RUNYON       | QUANTUM            | Soprano Sax           | metal       | 1RXS |             | C-1RXS   | V-1RXS   |             |        |         |          |           |
| RUNYON       | "88"               | Alto Sax              | hard rubber | 1E   | L-1E (L4)   | C-1E     | V-1E     | SS-1E       | LG-1E  | X-1E    | P-1E     | VG-1E     |
| RUNYON       | CUSTOM             | Alto Sax              | hard rubber | 1E   | L-1E (L4)   | C-1E     | V-1E     | SS-1E       | LG-1E  | X-1E    | P-1E     | VG-1E     |
| RUNYON       | JAZZ               | Alto Sax              | hard rubber | 1E   | L-1E (L4)   | C-1E     | V-1E     | SS-1E       | LG-1E  | X-1E    | P-1E     | VG-1E     |
| RUNYON       | "XL"               | Alto Sax              | hard rubber | 1M   | L-1M (L11)  | C-1M     | V-1M(A)  | SS-1M       | LG-1M  | X-1M    | P-1M     |           |
| RUNYON       | QUANTUM            | Alto Sax              | hard rubber | 1M   | L-1M (L11)  | C-1M     | V-1M(A)  | SS-1M       | LG-1M  | X-1M    | P-1M     |           |
| RUNYON       | FINESSE            | Alto Sax              | hard rubber | 1RL  | L-1RL (L6)  | C-1RL    | V-1RL(A) | SS-1RL      | LG-1RL | X-1RL   | P-1RL    | VG-1RL(A) |
| RUNYON       | BIONIX             | Alto Sax              | hard rubber | 1RR  |             |          |          |             |        |         |          |           |
| RUNYON       | QUANTUM            | Alto Sax              | metal       | 1M   | L-1M (L11)  | C-1M     | V-1M(A)  | SS-1M       | LG-1M  | X-1M    | P-1M     |           |
| RUNYON       | SMOOTH BORE        | Alto Sax              | metal       | 1M   | L-1M (L11)  | C-1M     | V-1M(A)  | SS-1M       | LG-1M  | X-1M    | P-1M     |           |
| RUNYON       | "88"               | Tenor Sax             | hard rubber | 1E   | L-1E (L4)   | C-1E     | V-1E     | SS-1E       | LG-1E  | X-1E    | P-1E     | VG-1E     |
| RUNYON       | CUSTOM             | Tenor Sax             | hard rubber | 1E   | L-1E (L4)   | C-1E     | V-1E     | SS-1E       | LG-1E  | X-1E    | P-1E     | VG-1E     |
| RUNYON       | FINESSE            | Tenor Sax             | hard rubber | 1E   | L-1E (L4)   | C-1E     | V-1E     | SS-1E       | LG-1E  | X-1E    | P-1E     | VG-1E     |
| RUNYON       | "XL"               | Tenor Sax             | hard rubber | 1RVS | L-1RVS (L3) | C-1RVS   | V-1RVS   | SS-1RVS     |        | X-1RVS  | P-1RVS   | VG-1RVS   |
| RUNYON       | QUANTUM            | Tenor Sax             | hard rubber | 1RVS | L-1RVS (L3) | C-1RVS   | V-1RVS   | SS-1RVS     |        | X-1RVS  | P-1RVS   | VG-1RVS   |
| RUNYON       | "22"               | Tenor Sax             | hard rubber | 2R   | L-2R (L8)   | C-2R     | V-2R     | SS-2R       | LG-2R  | X-2R    | P-2R     | VG-2R     |
| RUNYON       | BIONIX             | Tenor Sax             | hard rubber | 2RS  | L-2RS (L7)  |          |          |             |        |         |          |           |
| RUNYON       | "SR"               | Tenor Sax             | hard rubber | 3ML  | L-3ML (L13) | C-3ML    | V-3ML(T) | SS-3ML      | LG-3ML | X-3ML   | P-3ML    | VG-3ML(T) |
| RUNYON       | QUANTUM            | Tenor Sax             | metal       | 1RVS | L-1RVS (L3) | C-1RVS   | V-1RVS   | SS-1RVS     |        | X-1RVS  | P-1RVS   | VG-1RVS   |
| RUNYON       | "XL"               | Tenor Sax             | metal       | 3ML  | L-3ML (L13) | C-3ML    | V-3ML(T) | SS-3ML      | LG-3ML | X-3ML   | P-3ML    | VG-3ML(T) |
| RUNYON       | SMOOTH BORE        | Tenor Sax             | metal       | 3ML  | L-3ML (L13) | C-3ML    | V-3ML(T) | SS-3ML      | LG-3ML | X-3ML   | P-3ML    | VG-3ML(T) |

## Mouthpiece Brands - Known Ligature Sizes - Runyon to Tibbs

| Manufacturer    | Manufacturer Model | Instrument   | Composition | Dark | Light       | Mark III | Versa    | Star Series | Legacy | Versa-x | Platinum | Van Gogh  |
|-----------------|--------------------|--------------|-------------|------|-------------|----------|----------|-------------|--------|---------|----------|-----------|
| RUNYON          | QUANTUM            | Baritone Sax | hard rubber | 1E   | L-1E (L4)   | C-1E     | V-1E     | SS-1E       | LG-1E  | X-1E    | P-1E     | VG-1E     |
| RUNYON          | "88"               | Baritone Sax | hard rubber | 1RL  | L-1RL (L6)  | C-1RL    | V-1RL(T) | SS-1RL      | LG-1RL | X-1RL   | P-1RL    |           |
| RUNYON          | CUSTOM             | Baritone Sax | hard rubber | 1RL  | L-1RL (L6)  | C-1RL    | V-1RL(T) | SS-1RL      | LG-1RL | X-1RL   | P-1RL    |           |
| RUNYON          | QUANTUM            | Baritone Sax | metal       | 1E   | L-1E (L4)   | C-1E     | V-1E     | SS-1E       | LG-1E  | X-1E    | P-1E     | VG-1E     |
| RUNYON          | SMOOTH BORE        | Baritone Sax | metal       | 1E   | L-1E (L4)   | C-1E     | V-1E     | SS-1E       | LG-1E  | X-1E    | P-1E     | VG-1E     |
| SELMER          | SUPER SESSION      | Soprano Sax  | hard rubber | 1RVS | L-1RVS (L3) | C-1RVS   | V-1RVS   | SS-1RVS     |        | X-1RVS  | P-1RVS   | VG-1RVS   |
| SELMER          |                    | Soprano Sax  | hard rubber | 1RVS | L-1RVS (L3) | C-1RVS   | V-1RVS   | SS-1RVS     |        | X-1RVS  | P-1RVS   | VG-1RVS   |
| SELMER          |                    | Soprano Sax  | metal       | 1MS  | L-1MS (L2)  |          |          |             |        |         |          |           |
| SELMER          | SUPER SESSION      | Alto Sax     | hard rubber | 1RL  | L-1RL (L6)  | C-1RL    | V-1RL(A) | SS-1RL      | LG-1RL | X-1RL   | P-1RL    | VG-1RL(A) |
| SELMER          |                    | Alto Sax     | hard rubber | 1RL  | L-1RL (L6)  | C-1RL    | V-1RL(A) | SS-1RL      | LG-1RL | X-1RL   | P-1RL    | VG-1RL(A) |
| SELMER          |                    | Alto Sax     | metal       | 1M   | L-1M (L11)  | C-1M     | V-1M(A)  | SS-1M       | LG-1M  | X-1M    | P-1M     |           |
| SELMER          | ARTIST             | Alto Sax     | metal       | 1RVS | L-1RVS (L3) | C-1RVS   | V-1RVS   | SS-1RVS     |        | X-1RVS  | P-1RVS   | VG-1RVS   |
| SELMER          |                    | Tenor Sax    | hard rubber | 2R   | L-2R (L8)   | C-2R     | V-2R     | SS-2R       | LG-2R  | X-2R    | P-2R     | VG-2R     |
| SELMER          |                    | Tenor Sax    | metal       | 2M   | L-2M (L12)  | C-2M     | V-2M(T)  | SS-2M       | LG-2M  | X-2M    | P-2M     | VG-2M(T)  |
| SELMER          |                    | Baritone Sax | hard rubber | 3R   | L-3R (L9)   | C-3R     | V-3R     | SS-3R       | LG-3R  | X-3R    | P-3R     | VG-3R     |
| SELMER          |                    | Baritone Sax | metal       | 3ML  | L-3ML (L13) | C-3ML    | V-3ML(T) | SS-3ML      | LG-3ML | X-3ML   | P-3ML    | VG-3ML(T) |
| SELMER          |                    | Bass Sax     | hard rubber | 4R   |             |          |          |             |        |         |          |           |
| SR TECHNOLOGIES |                    | Soprano Sax  | hard rubber | 1RVS | L-1RVS (L3) | C-1RVS   | V-1RVS   | SS-1RVS     |        | X-1RVS  | P-1RVS   | VG-1RVS   |
| SR TECHNOLOGIES |                    | Soprano Sax  | metal       | 1MS  | L-1MS (L2)  |          |          |             |        |         |          |           |
| SR TECHNOLOGIES |                    | Alto Sax     | hard rubber | 1RL  | L-1RL (L6)  | C-1RL    | V-1RL(A) | SS-1RL      | LG-1RL | X-1RL   | P-1RL    | VG-1RL(A) |
| SR TECHNOLOGIES |                    | Alto Sax     | metal       | 1M   | L-1M (L11)  | C-1M     | V-1M(A)  | SS-1M       | LG-1M  | X-1M    | P-1M     |           |
| SR TECHNOLOGIES |                    | Tenor Sax    | metal       | 2M   | L-2M (L12)  | C-2M     | V-2M(T)  | SS-2M       | LG-2M  | X-2M    | P-2M     | VG-2M(T)  |
| SR TECHNOLOGIES |                    | Baritone Sax | hard rubber | 3ML  | L-3ML (L13) | C-3ML    | V-3ML(T) | SS-3ML      | LG-3ML | X-3ML   | P-3ML    | VG-3ML(T) |
| SUGAL           | LEIBMAN            | Soprano Sax  | metal       |      |             |          | V-RSM    |             |        |         |          |           |
| SUGAL           |                    | Alto Sax     | metal       | 2M   | L-2M (L12)  | C-2M     | V-2M(A)  | SS-2M       | LG-2M  | X-2M    | P-2M     |           |
| SUGAL           |                    | Tenor Sax    | metal       | 3ML  | L-3ML (L13) | C-3ML    | V-3ML(T) | SS-3ML      | LG-3ML | X-3ML   | P-3ML    | VG-3ML(T) |
| SUGAL           |                    | Baritone Sax | metal       | 3ML  | L-3ML (L13) | C-3ML    | V-3ML(T) | SS-3ML      | LG-3ML | X-3ML   | P-3ML    | VG-3ML(T) |
| THEO WANNE      | GAIA 2             | Soprano Sax  | hard rubber | 1RVS | L-1RVS (L3) | C-1RVS   | V-1RVS   | SS-1RVS     |        | X-1RVS  | P-1RVS   | VG-1RVS   |
| THEO WANNE      | DURGA 3            | Soprano Sax  | hard rubber | 1RVS | L-1RVS (L3) | C-1RVS   | V-1RVS   | SS-1RVS     |        | X-1RVS  | P-1RVS   | VG-1RVS   |
| THEO WANNE      | DURGA 3 BLUE ART   | Soprano Sax  | hard rubber | 1RVS | L-1RVS (L3) | C-1RVS   | V-1RVS   | SS-1RVS     |        | X-1RVS  | P-1RVS   | VG-1RVS   |
| THEO WANNE      | DURGA 3            | Soprano Sax  | metal       | 1RVS | L-1RVS (L3) | C-1RVS   | V-1RVS   | SS-1RVS     |        | X-1RVS  | P-1RVS   | VG-1RVS   |
| THEO WANNE      | GAIA 2             | Alto Sax     | hard rubber | 1RL  | L-1RL (L6)  | C-1RL    | V-1RL(A) | SS-1RL      | LG-1RL | X-1RL   | P-1RL    | VG-1RL(A) |
| THEO WANNE      | DURGA 3            | Alto Sax     | hard rubber | 1RL  | L-1RL (L6)  | C-1RL    | V-1RL(A) | SS-1RL      | LG-1RL | X-1RL   | P-1RL    | VG-1RL(A) |
| THEO WANNE      | DURGA 3 BLUE ART   | Alto Sax     | hard rubber | 1RL  | L-1RL (L6)  | C-1RL    | V-1RL(A) | SS-1RL      | LG-1RL | X-1RL   | P-1RL    | VG-1RL(A) |
| THEO WANNE      | NY BROTHERS        | Alto Sax     | hard rubber | 1RL  | L-1RL (L6)  | C-1RL    | V-1RL(A) | SS-1RL      | LG-1RL | X-1RL   | P-1RL    | VG-1RL(A) |
| THEO WANNE      | MINDI ABAIR        | Alto Sax     | metal       | 1M   | L-1M (L11)  | C-1M     | V-1M(A)  | SS-1M       | LG-1M  | X-1M    | P-1M     |           |
| THEO WANNE      | AMBIKA 2           | Tenor Sax    | hard rubber | 2R   | L-2R (L8)   | C-2R     | V-2R     | SS-2R       | LG-2R  | X-2R    | P-2R     | VG-2R     |
| THEO WANNE      | AMBIKA 2 BLUE ART  | Tenor Sax    | hard rubber | 2R   | L-2R (L8)   | C-2R     | V-2R     | SS-2R       | LG-2R  | X-2R    | P-2R     | VG-2R     |
| THEO WANNE      | GAIA 2             | Tenor Sax    | hard rubber | 2R   | L-2R (L8)   | C-2R     | V-2R     | SS-2R       | LG-2R  | X-2R    | P-2R     | VG-2R     |
| THEO WANNE      | GAIA 2 BLUE ART    | Tenor Sax    | hard rubber | 2R   | L-2R (L8)   | C-2R     | V-2R     | SS-2R       | LG-2R  | X-2R    | P-2R     | VG-2R     |
| THEO WANNE      | SHIVA 2            | Tenor Sax    | hard rubber | 2R   | L-2R (L8)   | C-2R     | V-2R     | SS-2R       | LG-2R  | X-2R    | P-2R     | VG-2R     |
| THEO WANNE      | SHIVA 2 BLUE ART   | Tenor Sax    | hard rubber | 2R   | L-2R (L8)   | C-2R     | V-2R     | SS-2R       | LG-2R  | X-2R    | P-2R     | VG-2R     |
| THEO WANNE      | SLANT SIG          | Tenor Sax    | hard rubber | 2R   | L-2R (L8)   | C-2R     | V-2R     | SS-2R       | LG-2R  | X-2R    | P-2R     | VG-2R     |
| THEO WANNE      | SLANT SIG BLUE ART | Tenor Sax    | hard rubber | 2R   | L-2R (L8)   | C-2R     | V-2R     | SS-2R       | LG-2R  | X-2R    | P-2R     | VG-2R     |
| THEO WANNE      | GAIA 2             | Tenor Sax    | metal       | 3ML  | L-3ML (L13) | C-3ML    | V-3ML(T) | SS-3ML      | LG-3ML | X-3ML   | P-3ML    | VG-3ML(T) |
| THEO WANNE      | AMBIKA 2           | Tenor Sax    | metal       | 3ML  | L-3ML (L13) | C-3ML    | V-3ML(T) | SS-3ML      | LG-3ML | X-3ML   | P-3ML    | VG-3ML(T) |
| THEO WANNE      | SHIVA 2            | Tenor Sax    | metal       | 3ML  | L-3ML (L13) | C-3ML    | V-3ML(T) | SS-3ML      | LG-3ML | X-3ML   | P-3ML    | VG-3ML(T) |
| THEO WANNE      | DURGA 3            | Tenor Sax    | metal       | 3ML  | L-3ML (L13) | C-3ML    | V-3ML(T) | SS-3ML      | LG-3ML | X-3ML   | P-3ML    | VG-3ML(T) |
| TIBBS           |                    | Soprano Sax  | metal       | 1MS  | L-1MS (L2)  |          |          |             |        |         |          |           |
| TIBBS           |                    | Alto Sax     | metal       | 2M   | L-2M (L12)  | C-2M     | V-2M(A)  | SS-2M       | LG-2M  | X-2M    | P-2M     |           |
| TIBBS           |                    | Tenor Sax    | metal       | 3ML  | L-3ML (L13) | C-3ML    | V-3ML(T) | SS-3ML      | LG-3ML | X-3ML   | P-3ML    | VG-3ML(T) |
| TIBBS           |                    | Baritone Sax | metal       | 1RL  | L-1RL (L6)  | C-1RL    | V-1RL(T) | SS-1RL      | LG-1RL | X-1RL   | P-1RL    |           |



## Mouthpiece Brands - Known Ligature Sizes - Vandoren to Zagar

| Manufacturer   | Manufacturer Model | Instrument   | Composition | Dark | Light       | Mark III | Versa    | Star Series | Legacy | Versa-x | Platinum | Van Gogh  |
|----------------|--------------------|--------------|-------------|------|-------------|----------|----------|-------------|--------|---------|----------|-----------|
| VANDOREN       |                    | Soprano Sax  | hard rubber | 1RVS | L-1RVS (L3) | C-1RVS   | V-1RVS   | SS-1RVS     |        | X-1RVS  | P-1RVS   | VG-1RVS   |
| VANDOREN       | V-16               | Soprano Sax  | hard rubber |      |             |          | V-RTM    | SS-RTM      | LG-RTM |         | P-RTM    |           |
| VANDOREN       |                    | Alto Sax     | hard rubber | 1RL  | L-1RL (L6)  | C-1RL    | V-1RL(A) | SS-1RL      | LG-1RL | X-1RL   | P-1RL    | VG-1RL(A) |
| VANDOREN       |                    | Tenor Sax    | hard rubber | 2R   | L-2R (L8)   | C-2R     | V-2R     | SS-2R       | LG-2R  | X-2R    | P-2R     | VG-2R     |
| VANDOREN       |                    | Tenor Sax    | metal       | 3ML  | L-3ML (L13) | C-3ML    | V-3ML(T) | SS-3ML      | LG-3ML | X-3ML   | P-3ML    | VG-3ML(T) |
| VANDOREN       |                    | Baritone Sax | hard rubber | 3R   | L-3R (L9)   | C-3R     | V-3R     | SS-3R       | LG-3R  | X-3R    | P-3R     | VG-3R     |
| VANDOREN       |                    | Baritone Sax | metal       | 2M   | L-2M (L12)  | C-2M     | V-2M(T)  | SS-2M       | LG-2M  | X-2M    | P-2M     | VG-2M(T)  |
| VANDOREN       | SLIM LINE          | Tenor Sax    | hard rubber | 1RL  | L-1RL (L6)  | C-1RL    | V-1RL(T) | SS-1RL      | LG-1RL | X-1RL   | P-1RL    |           |
| VANDOREN       | SLIM LINE          | Baritone Sax | hard rubber | 2R   | L-2R (L8)   | C-2R     | V-2R     | SS-2R       | LG-2R  | X-2R    | P-2R     | VG-2R     |
| WARBURTON      | A-SERIES           | Soprano Sax  | hard rubber | 1MVS |             |          |          |             |        |         |          |           |
| WARBURTON      | J-SERIES           | Soprano Sax  | hard rubber | 1RVS | L-1RVS (L3) | C-1RVS   | V-1RVS   | SS-1RVS     |        | X-1RVS  | P-1RVS   | VG-1RVS   |
| WOLFE TAYNE    |                    | Alto Sax     | metal       | 1M   | L-1M (L11)  | C-1M     | V-1M(A)  | SS-1M       | LG-1M  | X-1M    | P-1M     |           |
| WOLFE TAYNE    |                    | Tenor Sax    | metal       | 1M   | L-1M (L11)  | C-1M     | V-1M(T)  | SS-1M       | LG-1M  | X-1M    | P-1M     |           |
| WOLFE TAYNE    |                    | Baritone Sax | metal       | 2M   | L-2M (L12)  | C-2M     | V-2M(T)  | SS-2M       | LG-2M  | X-2M    | P-2M     | VG-2M(T)  |
| WOODWIND       |                    | Soprano Sax  | hard rubber | 1RVS | L-1RVS (L3) | C-1RVS   | V-1RVS   | SS-1RVS     |        | X-1RVS  | P-1RVS   | VG-1RVS   |
| WOODWIND       |                    | Alto Sax     | hard rubber | 1RL  | L-1RL (L6)  | C-1RL    | V-1RL(A) | SS-1RL      | LG-1RL | X-1RL   | P-1RL    | VG-1RL(A) |
| WOODWIND       |                    | Tenor Sax    | hard rubber | 2R   | L-2R (L8)   | C-2R     | V-2R     | SS-2R       | LG-2R  | X-2R    | P-2R     | VG-2R     |
| WOODWIND       |                    | Baritone Sax | hard rubber | 3R   | L-3R (L9)   | C-3R     | V-3R     | SS-3R       | LG-3R  | X-3R    | P-3R     | VG-3R     |
| WOODWIND       |                    | Bass Sax     | hard rubber | 4R   |             |          |          |             |        |         |          |           |
| YAMAHA         |                    | Soprano Sax  | hard rubber | 1RVS | L-1RVS (L3) | C-1RVS   | V-1RVS   | SS-1RVS     |        | X-1RVS  | P-1RVS   | VG-1RVS   |
| YAMAHA         |                    | Alto Sax     | hard rubber | 1RL  | L-1RL (L6)  | C-1RL    | V-1RL(A) | SS-1RL      | LG-1RL | X-1RL   | P-1RL    | VG-1RL(A) |
| YAMAHA         |                    | Tenor Sax    | hard rubber | 2R   | L-2R (L8)   | C-2R     | V-2R     | SS-2R       | LG-2R  | X-2R    | P-2R     | VG-2R     |
| YAMAHA         |                    | Baritone Sax | hard rubber | 3R   | L-3R (L9)   | C-3R     | V-3R     | SS-3R       | LG-3R  | X-3R    | P-3R     | VG-3R     |
| YANIGASAWA     |                    | Soprano Sax  | hard rubber | 1RVS | L-1RVS (L3) | C-1RVS   | V-1RVS   | SS-1RVS     |        | X-1RVS  | P-1RVS   | VG-1RVS   |
| YANIGASAWA     |                    | Soprano Sax  | metal       | 1MVS |             |          |          |             |        |         |          |           |
| YANIGASAWA     |                    | Alto Sax     | hard rubber | 1RL  | L-1RL (L6)  | C-1RL    | V-1RL(A) | SS-1RL      | LG-1RL | X-1RL   | P-1RL    | VG-1RL(A) |
| YANIGASAWA     |                    | Alto Sax     | metal       | 2M   | L-2M (L12)  | C-2M     | V-2M(A)  | SS-2M       | LG-2M  | X-2M    | P-2M     |           |
| YANIGASAWA     |                    | Tenor Sax    | hard rubber | 2R   | L-2R (L8)   | C-2R     | V-2R     | SS-2R       | LG-2R  | X-2R    | P-2R     | VG-2R     |
| YANIGASAWA     |                    | Tenor Sax    | metal       | 2M   | L-2M (L12)  | C-2M     | V-2M(T)  | SS-2M       | LG-2M  | X-2M    | P-2M     | VG-2M(T)  |
| YANIGASAWA     |                    | Baritone Sax | hard rubber | 3R   | L-3R (L9)   | C-3R     | V-3R     | SS-3R       | LG-3R  | X-3R    | P-3R     | VG-3R     |
| YANIGASAWA     |                    | Baritone Sax | metal       | 3ML  | L-3ML (L13) | C-3ML    | V-3ML(T) | SS-3ML      | LG-3ML | X-3ML   | P-3ML    | VG-3ML(T) |
| ZAGAR V-SERIES |                    | Tenor Sax    | metal       | 3ML  | L-3ML (L13) | C-3ML    | V-3ML(T) | SS-3ML      | LG-3ML | X-3ML   | P-3ML    | VG-3ML(T) |

# PROTEUS

## THE RECTANGULAR BORE CLARINET BARREL

**Band Students** (and woodwind doublers!) will notice better intonation and greater ease of play!

**Band Directors** will find a powerful and cost-effective tool for improving clarinet performance!

**Experienced Players** will notice increased clarity of throat tones and increased tonal dimension, more even scales, improved articulation, more incisive and dynamic response and improved altissimo!



- Superior Intonation And Greater Ease Of Play For Every Level Player, From The Developing Student To The Pro “Doubler” Who Struggles With Intonation When Moving From Sax To Clarinet
- Revolutionary, Patented Approach Allows The Player To Personalize The Playing Experience By Rotating The Barrel For The Most Dynamic Response
- Available In Sizes 62 to 68 To Assist In Achieving The Best Possible Tuning
- Constructed Of Our Durable, Attractive “Pro-Finish” Polymer... Stable In All Weather Conditions.
- Clean by wiping with a damp cloth. Do not submerge! Spray with sanitizer if desired.

**Make A Minor Investment...  
Get Major Results!**

**Patented!**

*Full technical info available on website.*

**Want Even Greater  
Performance?  
Pair It With  
A Rovner™ Ligature!**

# THE MOUTHPIECE MANAGER BY ROVNER™



Mouthpieces  
are serious business!  
You need a  
**MANAGER!**



**GREAT FOR**  
**Mouthpiece Collectors**  
**Band Directors • Music Stores**  
**Instrument Repair Shops!**

Organize and display 12 saxophone or clarinet mouthpieces of any size...  
Durable, convenient, lightweight, washable, stackable when not in use!

**TIDY gear...**  
**TINY price!**